

MULTI RESIDENTIAL DEVELOPMENT

76 RICKARD ROAD, LEPPINGTON

CIVIL DA SUBMISSION

GENERAL NOTES

- G1. ALL WORKS TO BE CONSTRUCTED IN ACCORDANCE WITH CAMDEN CITY COUNCIL DEVELOPMENT GUIDELINES, ASSOCIATED STANDARD DRAWINGS & SPECIFICATIONS U.N.O.
- G2. EXISTING SERVICES HAVE BEEN PLOTTED FROM SUPPLIED DATA AND AS SUCH THEIR ACCURACY CANNOT BE GUARANTEED. IT IS THE RESPONSIBILITY OF THE CONTRACTOR TO ESTABLISH THE LOCATION AND LEVEL OF ALL EXISTING SERVICES PRIOR TO THE COMMENCEMENT OF ANY WORK. ANY DISCREPANCIES SHALL BE REPORTED TO THE SUPERINTENDENT.
- G3. ON COMPLETION OF SERVICES INSTALLATION, ALL DISTURBED AREAS SHALL BE RESTORED TO ORIGINAL LEVEL, INCLUDING KERBS, FOOTPATHS, CONCRETE AREAS, GRAVEL AREAS, GRASSED AREAS AND ROAD PAVEMENTS.
- G4. CONTRACTOR SHALL BE RESPONSIBLE FOR REPAIR OF ANY DAMAGE TO COUNCIL'S INFRASTRUCTURE. SUCH REPAIR OR REINSTATEMENT TO BE CARRIED OUT IMMEDIATELY TO THE SATISFACTION OF LOCAL COUNCIL.
- G5. CONTRACTOR TO UNDERTAKE ALL WORKS IN ACCORDANCE WITH ALL WORKPLACE HEALTH AND SAFETY REQUIREMENTS.
- G6. WHERE ANY EXCAVATION OR CONSTRUCTION WORKS ARE TO BE IN CLOSE PROXIMITY TO NEIGHBOURING LOT BOUNDARIES OR INFRASTRUCTURE, CONTRACTOR TO ALLOW IN SCOPE OF WORKS TO PROVIDE ALL MEASURE NECESSARY TO ENSURE THE INTEGRITY OF EXISTING BOUNDARIES AND INFRASTRUCTURE. THIS MAY INCLUDE THE USE OF LOW VIBRATION EQUIPMENT, TRENCH SHORING ETC AS REQUIRED.
- G7. PRIOR TO THE CONTRACTOR COMMENCING ANY WORKS DETAILED ON THESE DRAWINGS, THE CONTRACTOR IS TO NOTIFY ADG ENGINEERS (AUST) PTY LTD AND RECEIVE WRITTEN CONFIRMATION THAT WORKS CAN COMMENCE
- G8. CONTRACTOR TO PROVIDE AS CONSTRUCTED DRAWINGS FOR ALL CONSTRUCTED WORKS IN ACCORDANCE WITH LOCAL GOVERNMENT REQUIREMENTS. UNLESS OTHERWISE ADVISED BY ADG ENGINEERS.
- G9. CONTRACTOR TO UNDERTAKE ALL WORKS IN ACCORDANCE WITH OPW APPROVALS BY COUNCIL.
- G10. DRAWINGS TO BE READ IN CONJUNCTION WITH THE FOLLOWING CONSULTANTS DRAWINGS:

ARCHITECT - ROTHELOWMAN

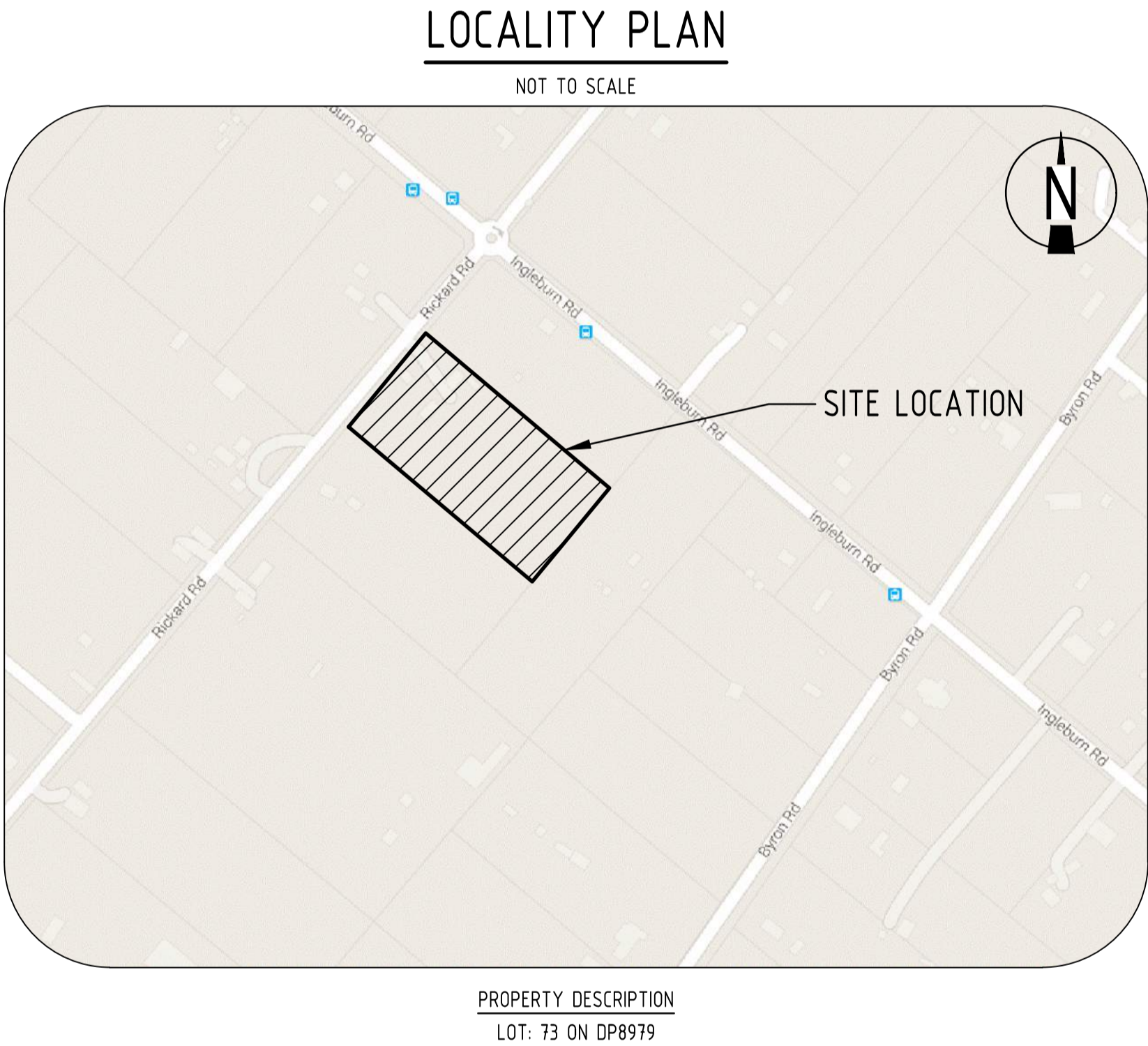
HYDRAULICS -

STRUCTURAL - ADG ENGINEERS

ELECTRICAL -

COMMUNICATIONS -

LANDSCAPING -



DRAWING SCHEDULE

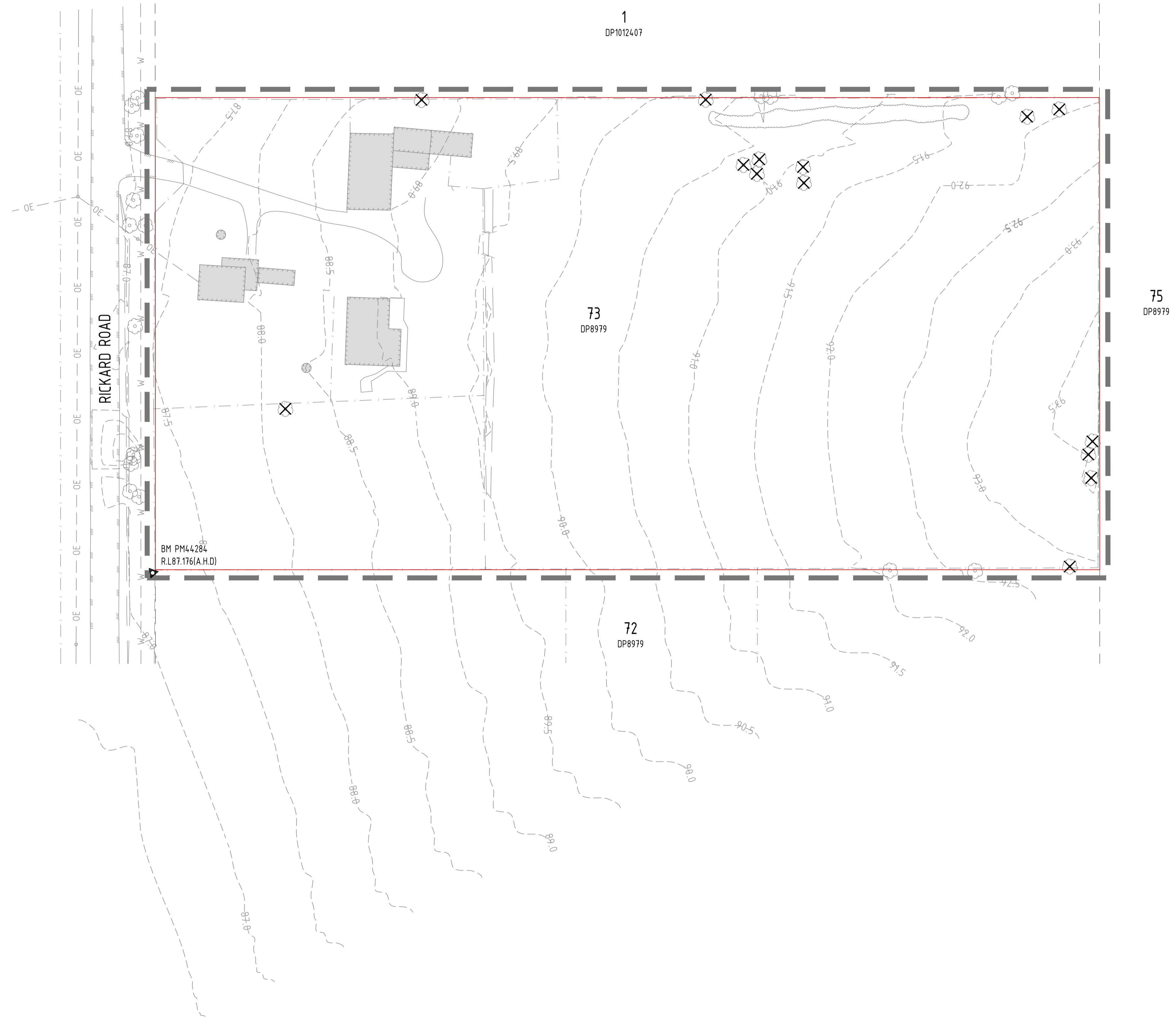
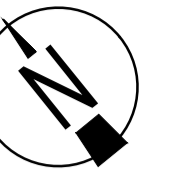
DRAWING No.	DRAWING TITLE
C01	DRAWING SCHEDULE, NOTES & LOCALITY PLAN
C02	EXISTING FEATURES LAYOUT PLAN
C20	BULK EARTHWORKS LAYOUT PLAN
C21	BULK EARTHWORKS SECTIONS - SHEET 1 OF 2
C22	BULK EARTHWORKS SECTIONS - SHEET 2 OF 2
C30	PROPOSED ULTIMATE ROADWORKS & DRAINAGE PROPOSAL
C31	ROADWORKS & STORMWATER DRAINAGE DETAILS
C32	PROPOSED INTERIM ROADWORKS & DRAINAGE PROPOSAL
C50	OVERALL SERVICES LAYOUT PLAN
C60	PROPOSED WATER RETICULATION LAYOUT PLAN
C70	PROPOSED SEWER RETICULATION SCHEMATIC LAYOUT PLAN

ISSUED FOR
APPROVAL

						<div><div><div><div>ADG</div><div>Sydney Office</div><div>Suite 802, Level 8, 181 Miller Street</div><div>North Sydney, New South Wales 2060, Australia</div></div><div><div>T 1300 657 402</div><div>F +617 3871 2266</div><div>E info@adgce.com</div><div>W www.adgce.com</div></div><div><div>BRISBANE / SYDNEY / MELBOURNE / GOLD COAST /</div><div>SUNSHINE COAST / DARWIN / PERTH</div></div></div></div>						Client NLI BYRON DEVELOPMENT PTY LTD			Discipline CIVIL		Status APPROVAL		Title DRAWING SCHEDULE, NOTES & LOCALITY PLAN		
A 03.11.16 Issued for Approval KH CM						Project Name MULTI RESIDENTIAL DEVELOPMENT 76 RICKARD ROAD, LEPPINGTON			Designed By CM		Checked By NB		Approved By JG								
02 22.02.16 Issued for Information BT NB						Project No. 18540			Drawn By BT		Scale at A1 N.T.S.										
01 15.02.16 Issued for Information BT NB						The concepts and information contained in this document are the copyright of ADG Engineers (Aust) Pty Ltd. Use or copying of the document in whole or in part without the written permission of ADG Engineers (Aust) Pty Ltd constitutes an infringement of copyright. Do not scale drawings. If in doubt, ask!															
Rev Date Description By CHK						Drawing No. C01							Revision A								

LEGEND

	EXISTING SURFACE CONTOURS
	LIMIT OF WORKS
	SITE BOUNDARY
	EXISTING PROPERTY BOUNDARY
	EXISTING EDGE OF ROAD
	EXISTING SEWER (RECORDS)
	EXISTING WATER
	EXISTING OVERHEAD ELECTRICITY
	EXISTING FENCE
	EXISTING VEGETATION
	EXISTING TREE
	EXISTING TREE TO BE REMOVED
	EXISTING BUILDING

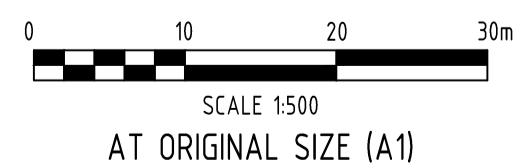


NOTE:

1. THE CONTRACTOR WILL MAKE HIMSELF FULLY AWARE OF THE EXISTING FEATURES OF THIS SITE AND ENSURE ANY ADDITIONAL WORKS NOT SHOWN ON THIS PLAN ARE INCLUDED IN THE CONTRACT.
2. CONTRACTOR TO LOCATE & PROTECT ALL EXISTING SERVICES ON SITE PRIOR TO COMMENCEMENT OF WORKS.
3. CONTRACTOR TO ORGANISE ALL DEMOLITION PERMITS PRIOR TO ANY DEMOLITION WORKS COMMENCING ON SITE.
4. SERVICES ON NEIGHBOURS DEVELOPMENTS SHOWN AS EXISTING AS ASSUMED WILL BE CONSTRUCTED PRIOR TO COMMENCEMENT OF WORKS.
5. ALL VEGETATION WITHIN THE LIMIT OF WORKS TO BE CLEARED, MULCHED & REMOVED FROM SITE.
6. CONTRACTOR TO LOCATE ALL EXISTING UTILITIES ON SITE & MAKE SUITABLE ARRANGEMENTS TO HAVE DISCONNECTED.
7. PRIOR TO THE CONTRACTOR COMMENCING ANY WORKS DETAILED ON THIS DRAWING, THE CONTRACTOR IS TO NOTIFY ADG ENGINEERS (AUST) PTY LTD AND RECEIVE WRITTEN CONFIRMATION THAT WORKS CAN COMMENCE

ISSUED FOR
APPROVAL

A	03.11.16	Issued for Approval		KH	CM
02	22.02.16	Issued for Information		BT	NB
01	15.02.16	Issued for Information		BT	NB
Rev	Date	Description		By	Chk

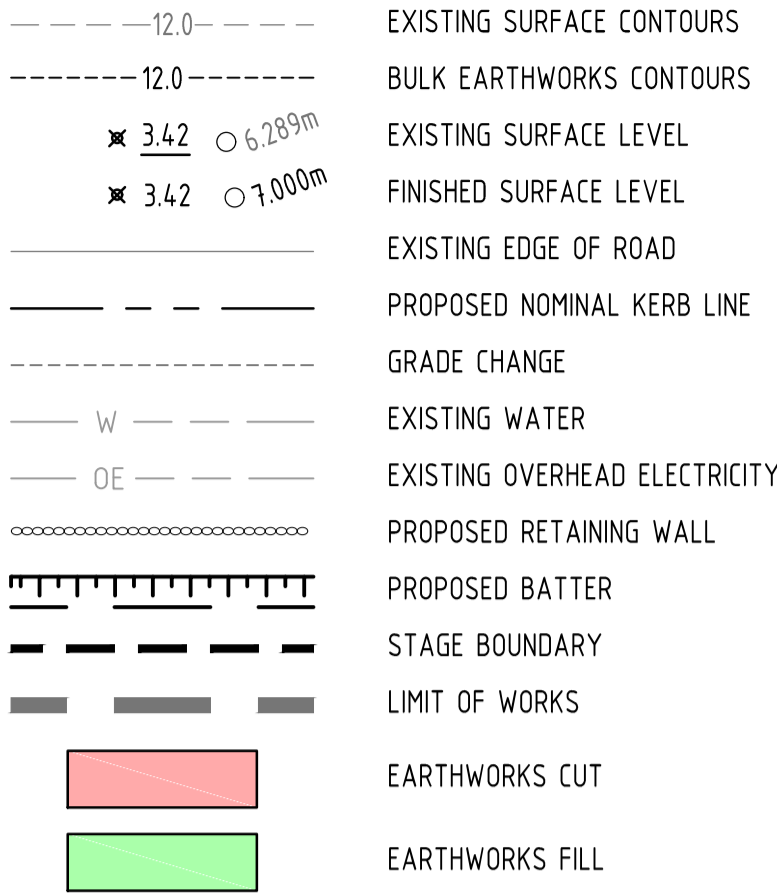


Sydney Office
Suite 802, Level 8, 181 Miller Street
North Sydney, New South Wales 2060, Australia

T 1300 657 402 F +617 3871 2266
E info@adgce.com W www.adgce.com
BRISBANE / SYDNEY / MELBOURNE / GOLD COAST / SUNSHINE COAST / DARWIN / PERTH

Client NLI BYRON DEVELOPMENT PTY LTD	Discipline CIVIL		Status APPROVAL	Title EXISTING FEATURES LAYOUT PLAN
Project Name MULTI RESIDENTIAL DEVELOPMENT 76 RICKARD ROAD, LEPPINGTON	Designed By CM	Checked By NB	Approved By JG	
	Project No. 18540	Drawn By BT	Scale at A1 1:500	
The concepts and information contained in this document are the copyright of ADG Engineers (Aust) Pty Ltd. Use or copying of the document in whole or in part without the written permission of ADG Engineers (Aust) Pty Ltd constitutes an infringement of copyright. Do not scale drawings. If in doubt, ask!				
				Revision A

LEGEND



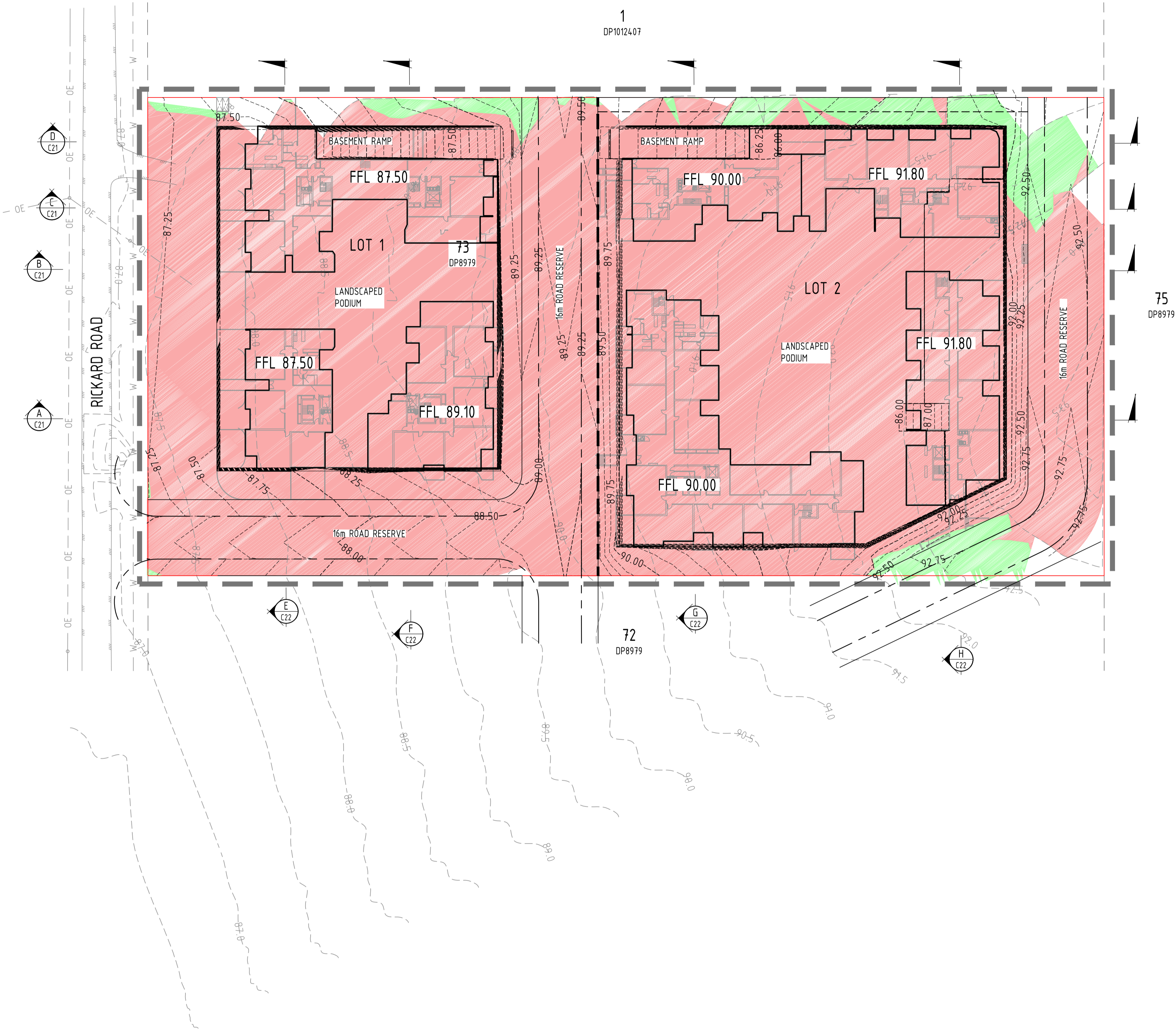
EARTHWORKS VOLUMES		
(EXISTING SURFACE TO BASEMENT DESIGN SURFACE)		
	TOTAL CUT	61,325m³
	TOTAL FILL	145m³
	TOTAL BALANCE (SPOIL)	61,180³
NOTE: VOLUMES DO NOT MAKE ALLOWANCE FOR COMPACTION/ SWELLING FACTORS OR TOP SOIL STRIPPING		

EARTHWORKS NOTES

- GRASS AND TOPSOIL SHALL BE STRIPPED TO A DEPTH OF 100mm OVER THE EXTENT OF THE WORKS UNLESS DIRECTED OTHERWISE AND STOCKPILED FOR FUTURE USE AS NON-STRUCTURAL FILL IF REQUIRED, OR REMOVE FROM SITE.
- COMPACT THE EXPOSED SUBGRADE OR LOOSE TOP LEVEL MATERIAL TO A MINIMUM 95% STANDARD MAXIMUM DRY DENSITY TO AS1289 5.1.1. ANY 'SOFT SPOTS' IDENTIFIED BY THE PROOF ROLLING SHALL BE REMOVED AND REPLACED WITH A COMPACTED IMPORTED GENERAL FILL MATERIAL TO THE ABOVE COMPACTION REQUIREMENTS.
- ALL EXPOSED SUBGRADE AREAS SHALL BE COMPACTED TO 95% STANDARD MAXIMUM DRY DENSITY (AS 1289 5.1.1) IN LAYERS NOT EXCEEDING 150mm COMPACTED THICKNESS.
- THE NOMINATED GEOTECHNICAL TESTING AUTHORITY SHALL PROVIDE CERTIFICATION THAT ALL GENERAL EARTHWORKS OPERATIONS HAVE BEEN CARRIED OUT IN ACCORDANCE WITH THE DRAWINGS.
- FINISHED SURFACES TO ALL DISTURBED AREAS ARE TO BE TREATED IN ACCORDANCE WITH LANDSCAPE DRAWINGS.
- ALL EARTHWORKS TO BE CARRIED OUT AT +/- 2% OPTIMUM MOISTURE CONTENT.
- EARTHWORKS LEVELS SHOWN ARE FINISHED SURFACE LEVELS INCLUSIVE OF 100mm TOPSOIL LAYER OR BUILDING SLAB THICKNESS. REFER TO STRUCTURAL ENGINEERING DRAWINGS FOR SLAB THICKNESSES AND HYDRAULIC DRAWINGS FOR SUB-FLOOR DRAINAGE FOR DETERMINATION OF REQUIRED BULK EARTHWORKS SURFACE. REFER TO ARCHITECTURAL DRGS FOR PODIUM LEVELS.
- ANY PROPOSED RETAINING WALL WORKS MUST BE WHOLLY WITHIN THE PROPERTY BOUNDARY OF THE SUBJECT SITE, INCLUDING REAR OF RETAINING WALL DRAINAGE INFRASTRUCTURE FOR RETAINING WALLS IN CUT.
- ALL NEW WORKS TO MATCH NEATLY INTO EXISTING
- ALL WORKS TO BE CONSTRUCTED IN ACCORDANCE WITH APPROVED MANAGEMENT PLANS.
- CONTRACTOR TO ENSURE SUITABLE EROSION CONTROL MEASURES ARE INSTALLED INCLUDING BUT NOT LIMITED TO SHAKE DOWNS, SILT FENCE ETC.
- PRIOR TO THE CONTRACTOR COMMENCING ANY WORKS DETAILED ON THIS DRAWING, THE CONTRACTOR IS TO NOTIFY ADG ENGINEERS (AUST) PTY LTD AND RECEIVE WRITTEN CONFIRMATION THAT WORKS CAN COMMENCE
- CONTRACTOR TO OBTAIN COUNCIL ROADWORKS AND FOOTPATH PERMITS FOR ANY PROPOSED WORKS EXTERNAL TO SITE BOUNDARY.
- ALL TEMPORARY AND FINAL BATTER SLOPES ARE TO BE INSPECTED AND APPROVED BY GEOTECHNICAL ENGINEER.
- REFER TO ARCHITECTURAL DRAWINGS FOR BUILDING SETOUT.
- MINIMUM ALLOWABLE BEARING CAPACITY TO BE 100kPa.

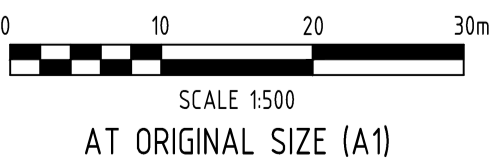
NOTE

FOR SITE SECTIONS REFER TO DRG No. C21 to C22



ISSUED FOR
APPROVAL

Rev	Date	Description	By	Chk
A	03.11.16	Issued for Approval	KH	CM
03	01.04.16	Issued for Information	BT	NB
02	22.02.16	Issued for Information	BT	NB
01	15.02.16	Issued for Information	BT	NB



Sydney Office
Suite 802, Level 8, 181 Miller Street
North Sydney, New South Wales 2060, Australia

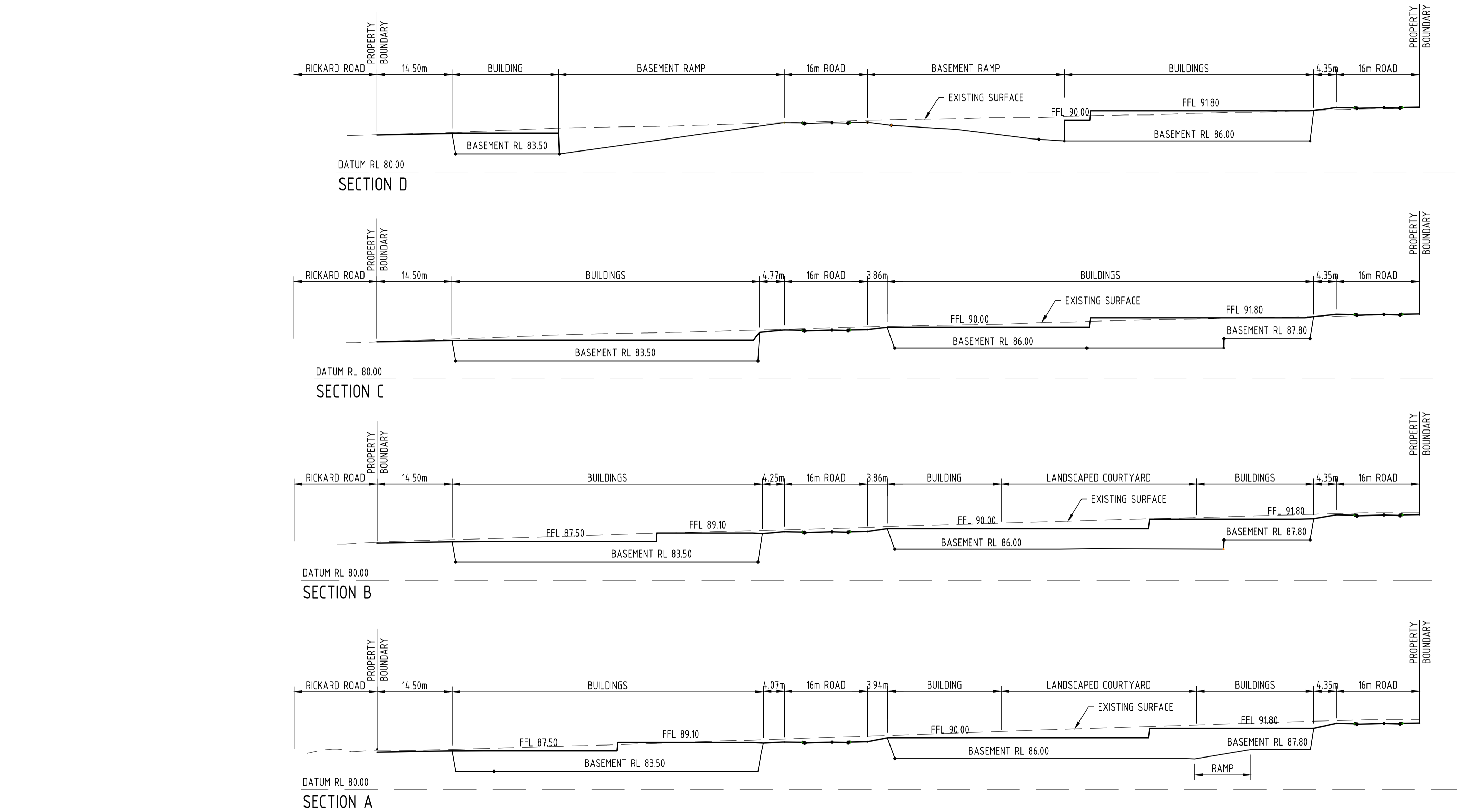
T 1300 657 402 F +617 3871 2266
E info@adgce.com W www.adgce.com
BRISBANE / SYDNEY / MELBOURNE / GOLD COAST / SUNSHINE COAST / DARWIN / PERTH

Client
NLI BYRON DEVELOPMENT PTY LTD
Project Name
MULTI RESIDENTIAL DEVELOPMENT
76 RICKARD ROAD,
LEPPINGTON

Discipline CIVIL		Status APPROVAL
Designed By CM	Checked By NB	Approved By JG
Project No. 18540	Drawn By BT	Scale at A1 1:500
The concepts and information contained in this document are the copyright of ADG Engineers (Aust) Pty Ltd. Use or copying of the document in whole or in part without the written permission of ADG Engineers (Aust) Pty Ltd constitutes an infringement of copyright. Do not scale drawings. If in doubt, ask!		

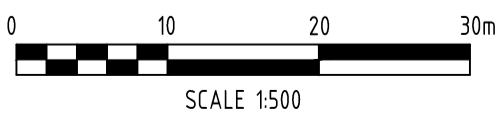
Title
BULK EARTHWORKS
LAYOUT PLAN

Drawing No. C20	Revision A
--------------------	---------------



ISSUED FOR
APPROVAL

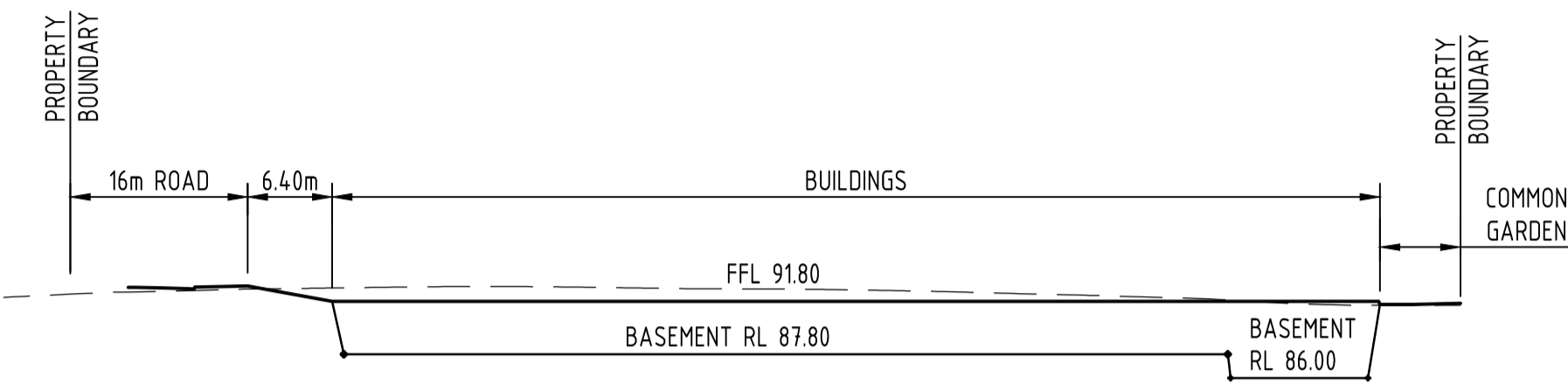
A	03.11.16	Issued for Approval		KH	CM
03	01.04.16	Issued for Information		BT	NB
02	22.02.16	Issued for Information		BT	NB
01	15.02.16	Issued for Information		BT	NB
Rev	Date	Description	By	Chk	



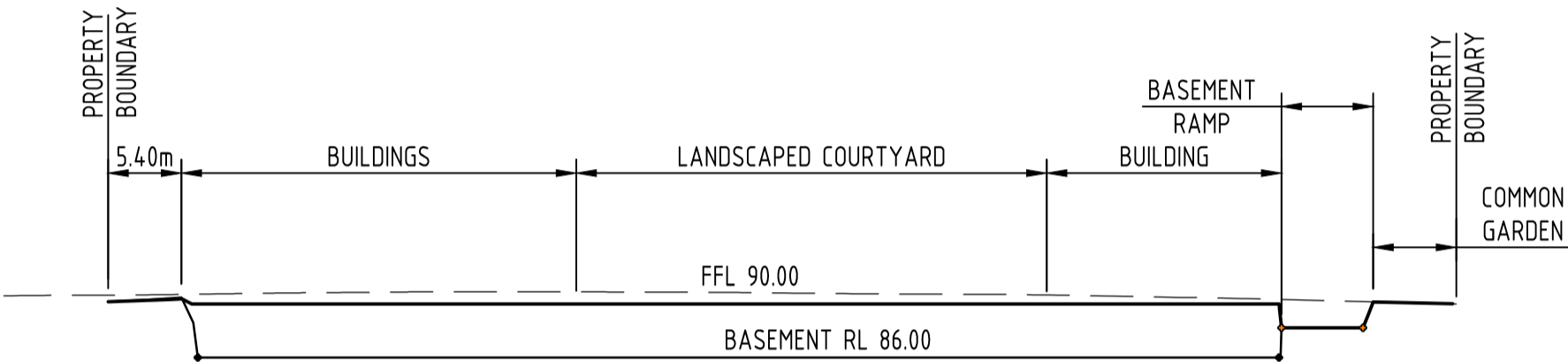
Sydney Office
Suite 802, Level 8, 181 Miller Street
North Sydney, New South Wales 2060, Australia

T 1300 657 402 F +617 3871 2266
E info@adgce.com W www.adgce.com
BRISBANE / SYDNEY / MELBOURNE / GOLD COAST / SUNSHINE COAST / DARWIN / PERTH

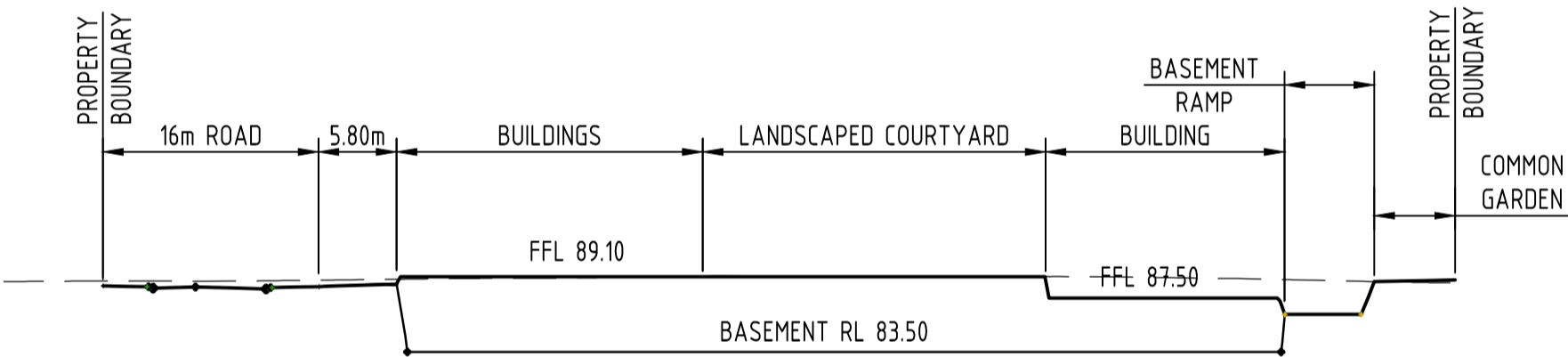
Client NLI BYRON DEVELOPMENT PTY LTD		Discipline CIVIL		Status APPROVAL	
Project Name MULTI RESIDENTIAL DEVELOPMENT		Designed By CM	Checked By NB	Approved By JG	Title BULK EARTHWORKS SITE SECTIONS SHEET 1 OF 2
76 RICKARD ROAD, LEPPINGTON		Project No. 18540	Drawn By BT	Scale at A1 1:500	
The concepts and information contained in this document are the copyright of ADG Engineers (Aust) Pty Ltd. Use or copying of the document in whole or in part without the written permission of ADG Engineers (Aust) Pty Ltd constitutes an infringement of copyright. Do not scale drawings. If in doubt, ask!					Drawing No. C21
					Revision A



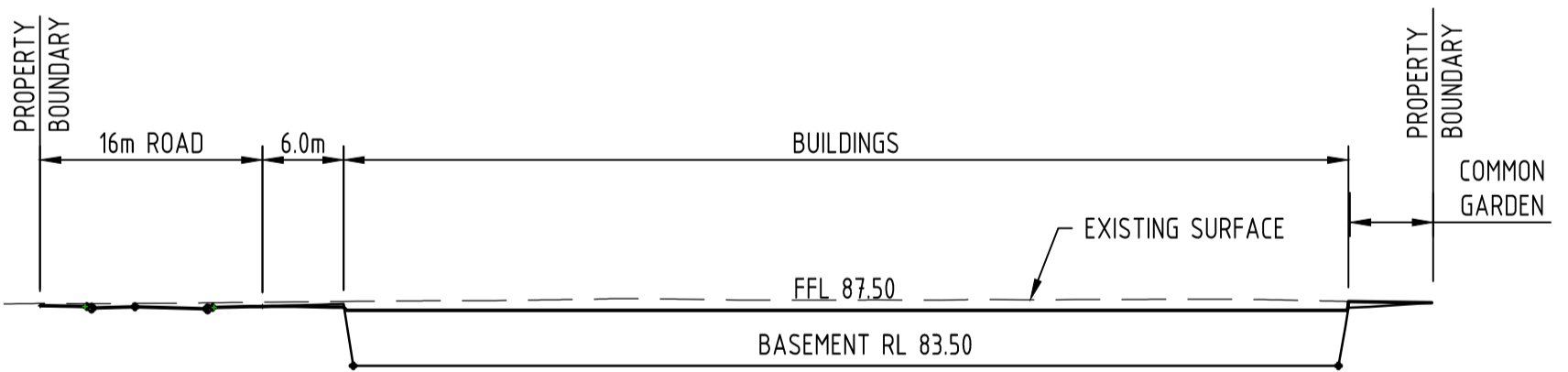
DATUM RL 80.00
SECTION H



DATUM RL 80.00
SECTION G



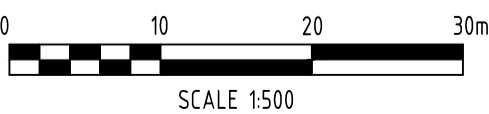
DATUM RL 80.00
SECTION F



DATUM RL 80.00
SECTION E

ISSUED FOR
APPROVAL

Rev	Date	Description	By	Chk
A	03.11.16	Issued for Approval	KH	CM
02	22.02.16	Issued for Information	BT	NB
01	15.02.16	Issued for Information	BT	NB



Sydney Office
Suite 802, Level 8, 181 Miller Street
North Sydney, New South Wales 2060, Australia

T 1300 657 402 F +617 3871 2266
E info@adgce.com W www.adgce.com
BRISBANE / SYDNEY / MELBOURNE / GOLD COAST / SUNSHINE COAST / DARWIN / PERTH

Client NLI BYRON DEVELOPMENT PTY LTD	Discipline CIVIL	Status APPROVAL	Title BULK EARTHWORKS SITE SECTIONS SHEET 2 OF 2
Project Name MULTI RESIDENTIAL DEVELOPMENT 76 RICKARD ROAD, LEPPINGTON	Designed By CM	Checked By NB	Approved By JG
	Project No. 18540	Drawn By BT	Scale at A1 1:500
The concepts and information contained in this document are the copyright of ADG Engineers (Aust) Pty Ltd. Use or copying of the document in whole or in part without the written permission of ADG Engineers (Aust) Pty Ltd constitutes an infringement of copyright. Do not scale drawings. If in doubt, ask!			Drawing No. C22
			Revision A

LEGEND

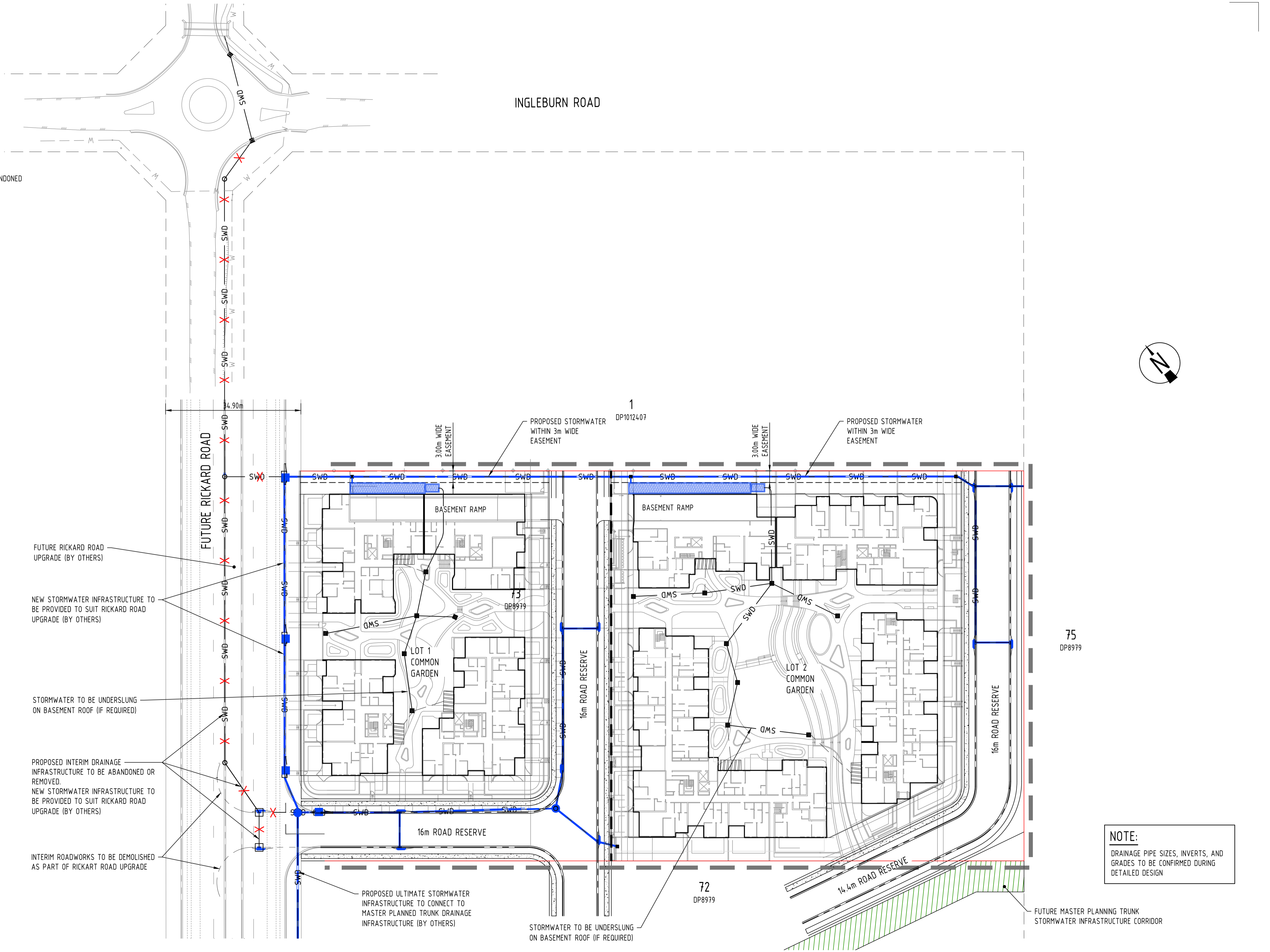
- SITE BOUNDARY
- PROPOSED NOMINAL KERB LINE
- LIMIT OF WORKS
- STAGE BOUNDARY
- PROPOSED GRASSED SWALE
- PROPOSED STORMWATER DRAINAGE
- PROPOSED STORMWATER DRAINAGE PIT
- PROPOSED STORMWATER DRAINAGE MANHOLE
- INTERIM STORMWATER INFRASTRUCTURE TO BE REMOVED / ABANDONED
- PROPOSED 12m WIDE FOOTPATH IN ACCORDANCE WITH CAMDEN COUNCIL GUIDELINES
- MASTER PLANNED TRUNK DRAINAGE CORRIDOR
- INDICATIVE RAINWATER TANK LOCATION

ROADWORKS & DRAINAGE NOTES

1. ALL ROADWORKS & DRAINAGE CONSTRUCTION AND TESTING TO BE IN ACCORDANCE WITH CAMDEN CITY COUNCIL DEVELOPMENT GUIDELINES, DRAWINGS AND SPECIFICATIONS.
2. ALL FOOTPATHS TO BE CONSTRUCTED IN ACCORDANCE WITH CAMDEN CITY COUNCIL STANDARDS


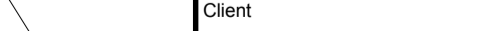
NOTE:

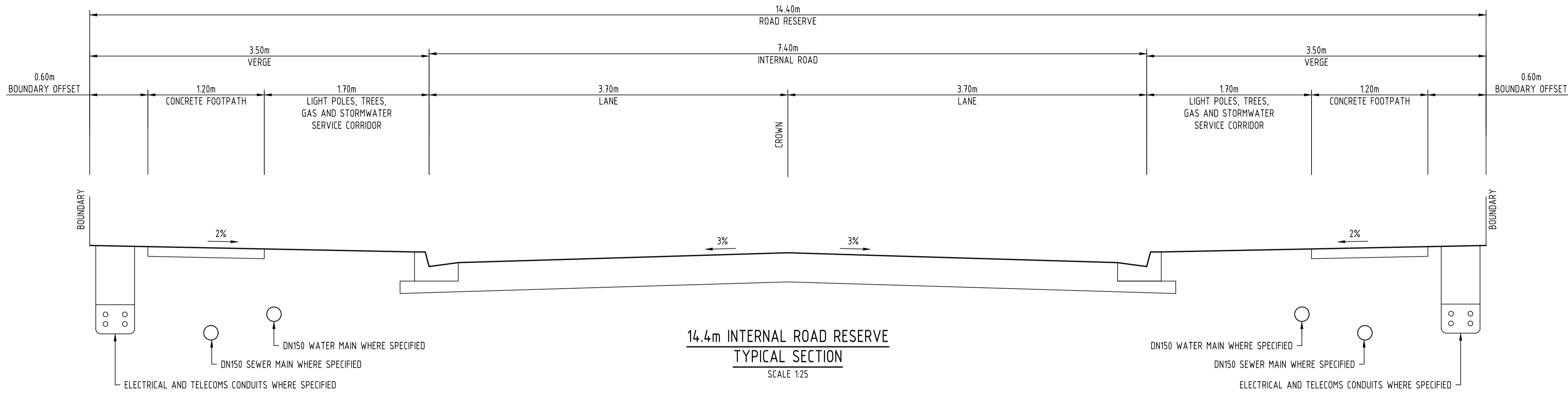
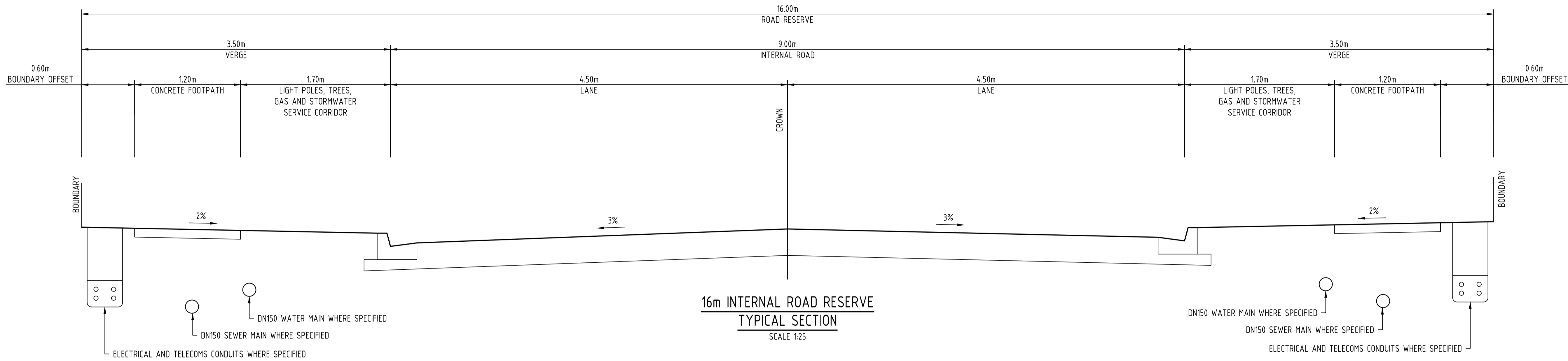
ALL SERVICES SHOWN OUTSIDE THE SITE BOUNDARY ARE INDICATIVELY ONLY AND DO NOT FORM PART OF THIS DEVELOPMENT APPLICATION.



NOTE:
DRAINAGE PIPE SIZES, INVERTS, AND GRADES TO BE CONFIRMED DURING DETAILED DESIGN

ISSUED FOR
APPROVAL

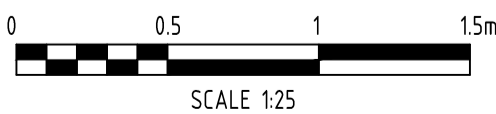
							 Sydney Office Suite 802, Level 8, 181 Miller Street North Sydney, New South Wales 2060, Australia T 1300 657 402 F +617 3871 2266 E info@adgce.com W www.adgce.com BRISBANE / SYDNEY / MELBOURNE / GOLD COAST / SUNSHINE COAST / DARWIN / PERTH		Client NLI BYRON DEVELOPMENT PTY LTD			Discipline CIVIL		Status APPROVAL		Title PRELIMINARY ULTIMATE ROADWORKS & DRAINAGE PROPOSAL	
							Project Name MULTI RESIDENTIAL DEVELOPMENT 76 RICKARD ROAD, LEPPINGTON			Designed By CDM		Checked By JG		Approved By JG			
										Project No. 18540		Drawn By KH		Scale at A1 1:500			
B 08.11.16 Issued for Approval					CDM JG									Drawing No. C30		Revision B	
A 03.11.16 Issued for Approval					KH CM												
Rev Date Description					By Chk												



NOTE
PUBLIC UTILITIES AND SERVICES HAVE BEEN LOCATED WITHIN THE ROAD RESERVE CORRIDOR IN ACCORDANCE WITH IPWEA STD DRG No. RS-100 & RS-101

ISSUED FOR
APPROVAL

Revision			By		Chk
B	03.03.17	Issued for Approval	KS	CM	
A	03.11.16	Issued for Approval	KH	CM	
03	03.03.16	Issued for Information	BT	NB	
02	22.02.16	Issued for Information	BT	NB	
01	15.02.16	Issued for Information	BT	NB	
Rev	Date	Description	By		Chk



Sydney Office
Suite 802, Level 8, 181 Miller Street
North Sydney, New South Wales 2060, Australia

T 1300 657 402 F +617 3871 2266
E info@adgce.com W www.adgce.com
BRISBANE / SYDNEY / MELBOURNE / GOLD COAST / SUNSHINE COAST / DARWIN / PERTH

Client
NLI BYRON DEVELOPMENT PTY LTD
Project Name
MULTI RESIDENTIAL DEVELOPMENT
76 RICKARD ROAD,
LEPPINGTON

Discipline		Status	
CIVIL		APPROVAL	
Designed By	CM	Checked By	NB
Project No.	18540	Drawn By	KS
The concepts and information contained in this document are the copyright of ADG Engineers (Aust) Pty Ltd. Use or copying of the document in whole or in part without the written permission of ADG Engineers (Aust) Pty Ltd constitutes an infringement of copyright. Do not scale drawings. If in doubt, ask!			

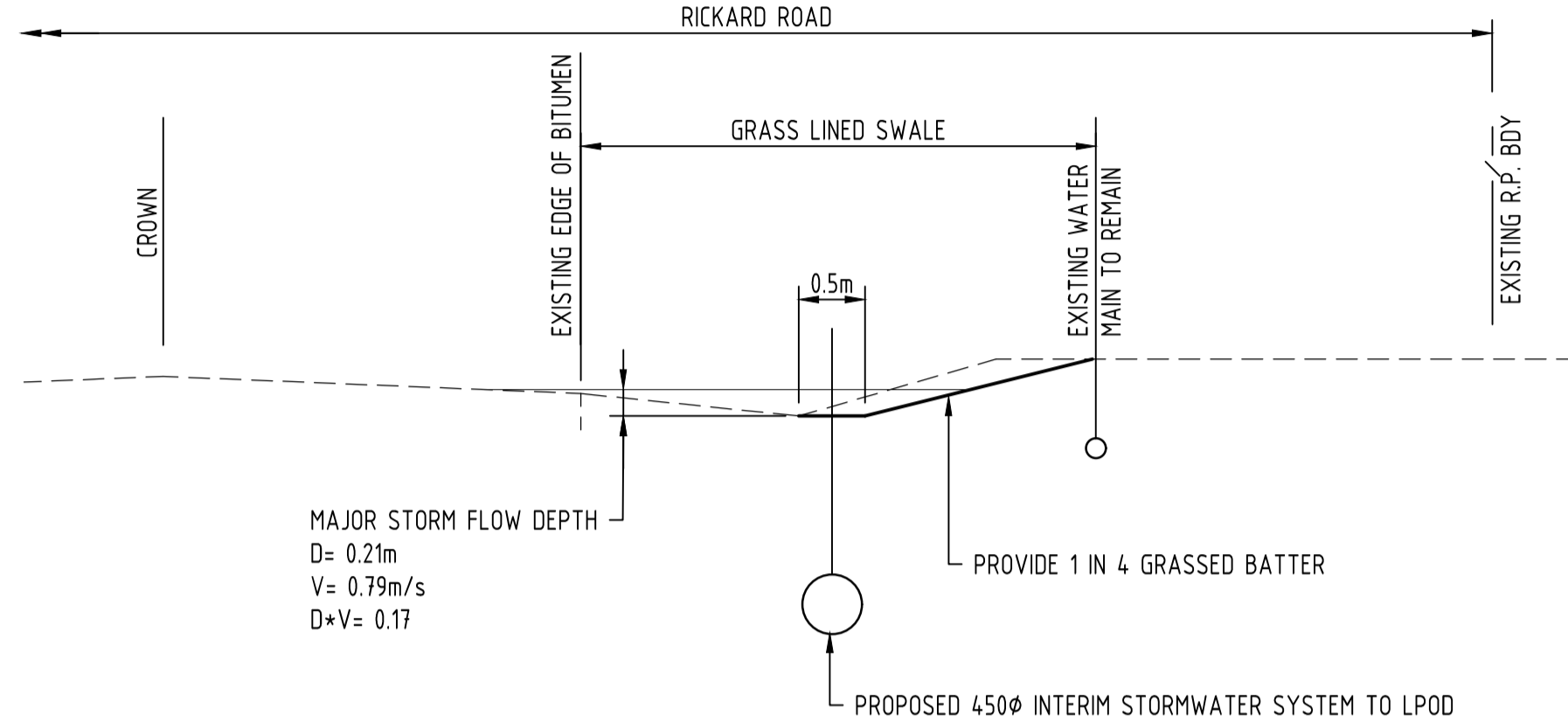
Title	
ROADWORKS & STORMWATER DRAINAGE DETAILS	
Drawing No.	Revision
C31	B

LEGEND

-
- | | |
|--|--------------------------------------|
| | SITE BOUNDARY |
| | PROPOSED NOMINAL KERB LINE |
| | LIMIT OF WORKS |
| | STAGE BOUNDARY |
| | EXISTING WATER MAIN |
| | PROPOSED INTERIM STORMWATER |
| | FUTURE STORMWATER |
| | PROPOSED STORMWATER DRAINAGE PIT |
| | PROPOSED STORMWATER DRAINAGE MANHOLE |

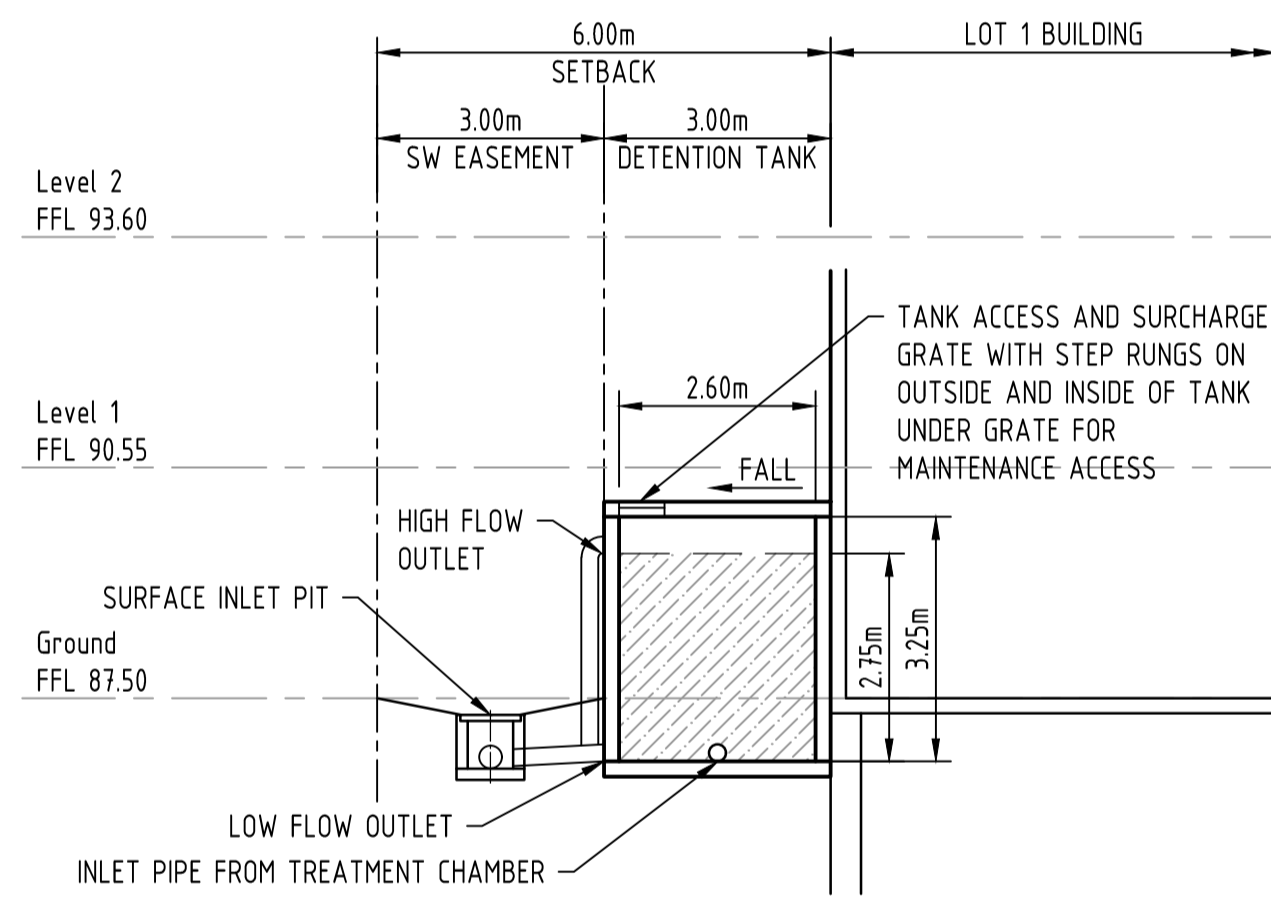
NOTES:

1. REFER TO DRG'S. C44 & C45 FOR LONGITUDINAL SECTIONS OF STORMWATER DRAINLINES.
2. ALL PIPE SIZES ARE 375Ø U.N.O.



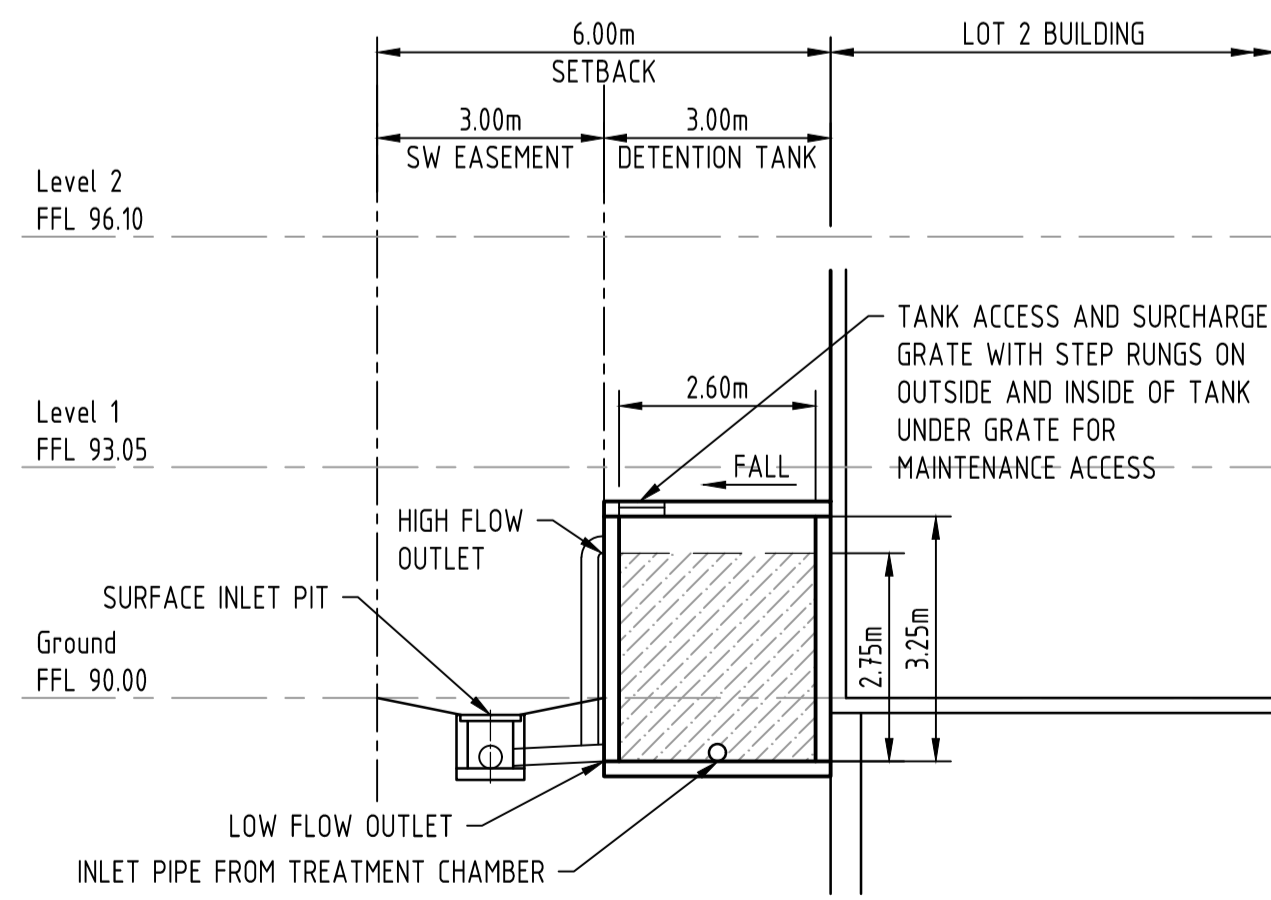
DETAIL A - TYPICAL RECONSTRUCTED ROADSIDE SWALE - RICKARD ROAD

SCALE 1:50



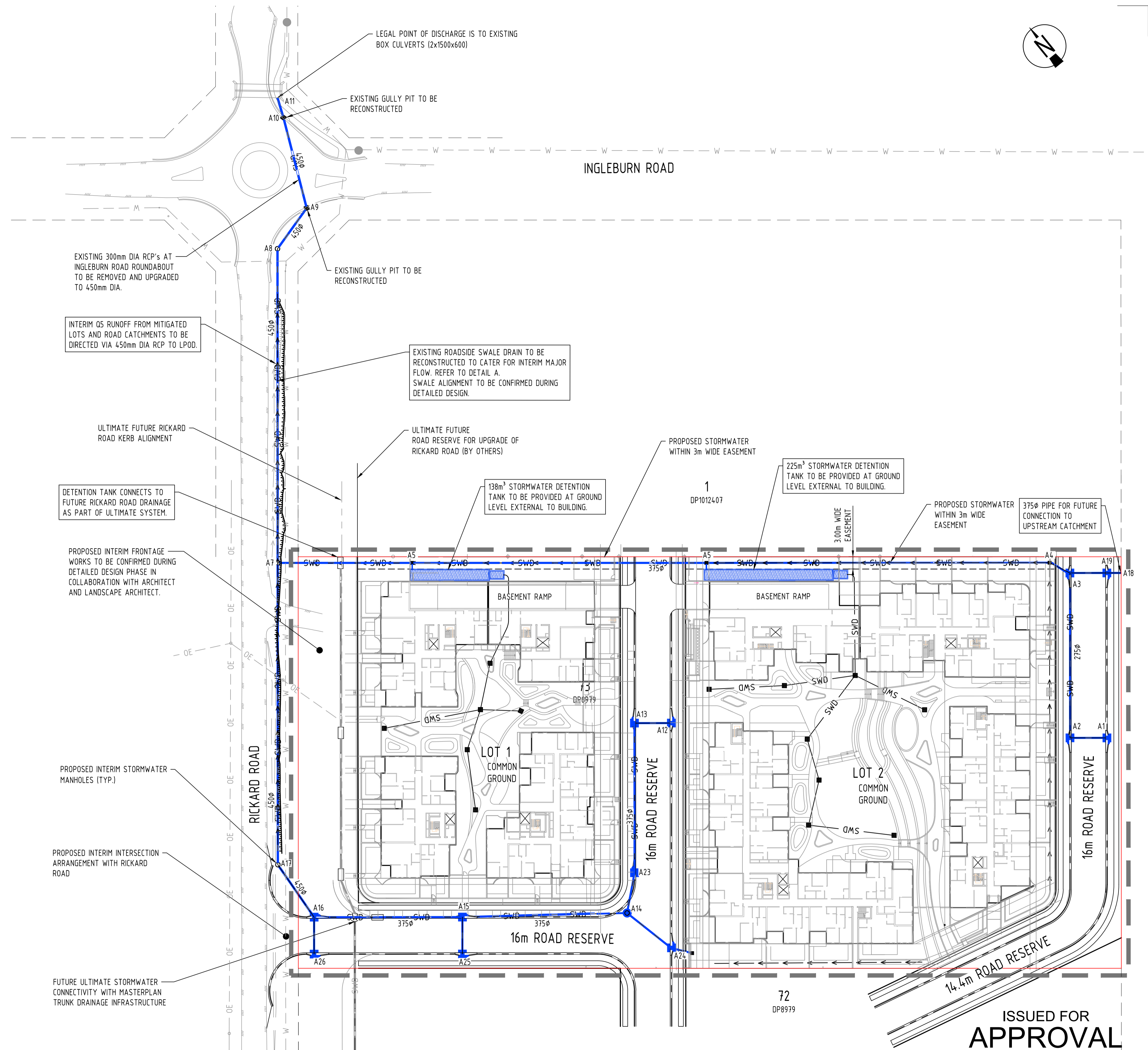
TYPICAL DETENTION TANK DETAIL - LOT 1

SCALE 1:100



TYPICAL DETENTION TANK DETAIL - LOT 2

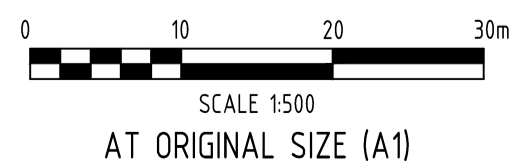
SCALE 1:100



ISSUED FOR
APPROVAL

B	03.03.17	Issued for Approval	KS	CM	
A	03.11.16	Issued for Approval	KH	CM	
Rev	Date	Description	By	Chk	

PLOT DATE: 3/9/2017 1:13 PM FILENAME: J:\18000\18540 - RICKARD\CVL\DWG\RICKARD RD\18540-C32.DWG



Sydney Office
Suite 802, Level 8, 181 Miller Street
North Sydney, New South Wales 2060, Australia

T 1300 657 402 F +617 3871 2266
E info@adgce.com W www.adgce.com
BRISBANE / SYDNEY / MELBOURNE / GOLD COAST / SUNSHINE COAST / DARWIN / PERTH

Client	NILBYRON DEVELOPMENT PTY LTD
--------	------------------------------

Project Name
MULTI RESIDENTIAL DEVELOPMENT
76 RICKARD ROAD,
LEPPINGTON

Discipline	
------------	--

Designed By	
-------------	--

Project No.
18540

Status	
--------	--

Approved By	JG
-------------	----

Scale at A1
1:500

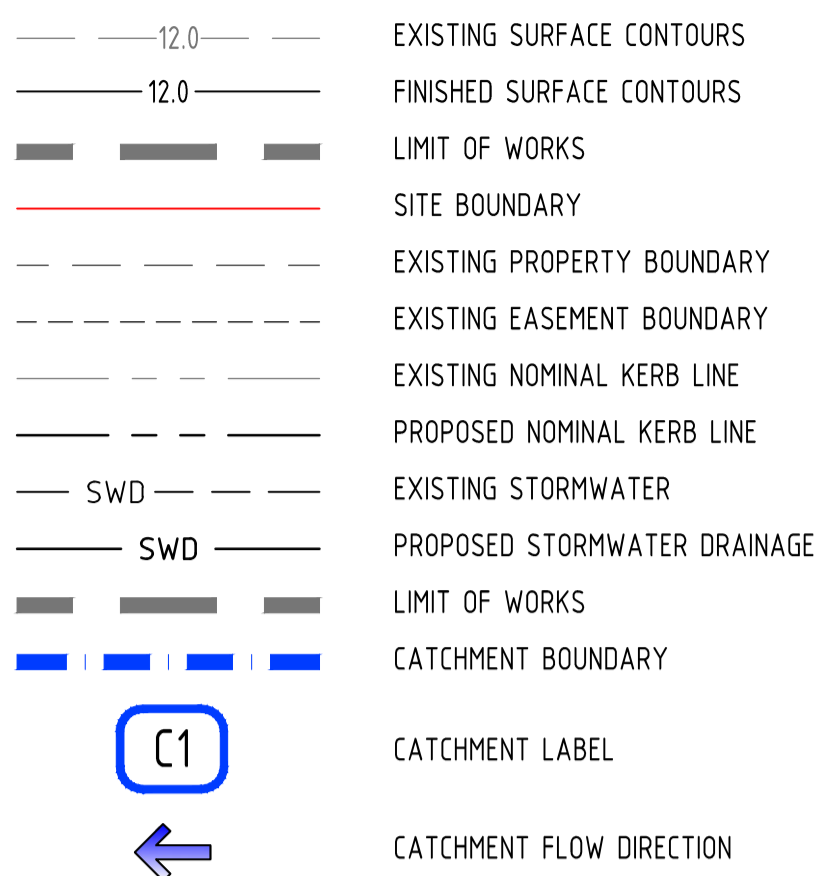
Title
PRELIMINARY INTERIM ROADWORKS
AND DRAINAGE PROPOSAL

Drawing No.
C32

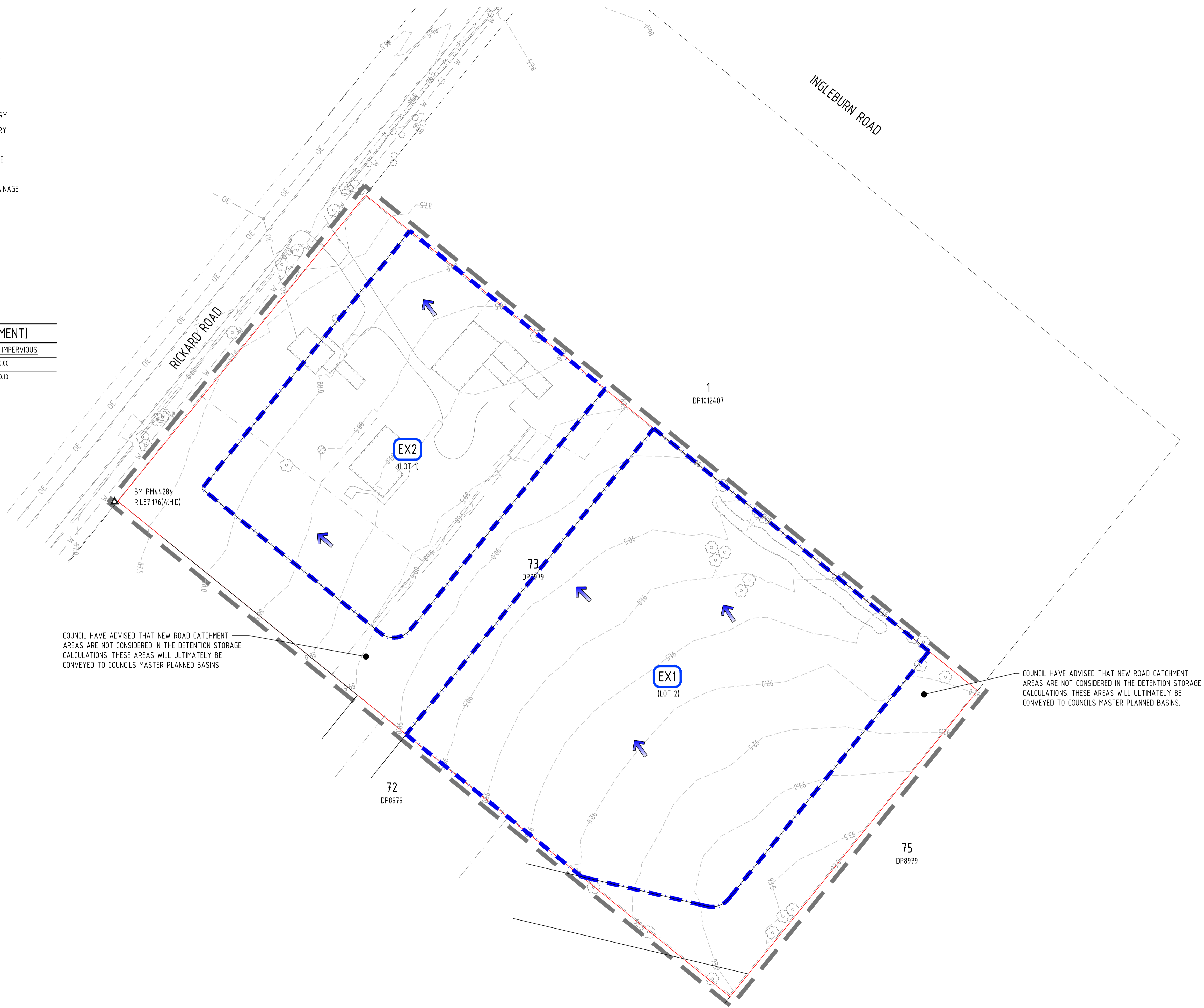
B

FULL SIZE ON ORIGINAL 0 10 20 30 40 50 60 70 80 90 100mm

LEGEND

CATCHMENT TABLE (PRE DEVELOPMENT)

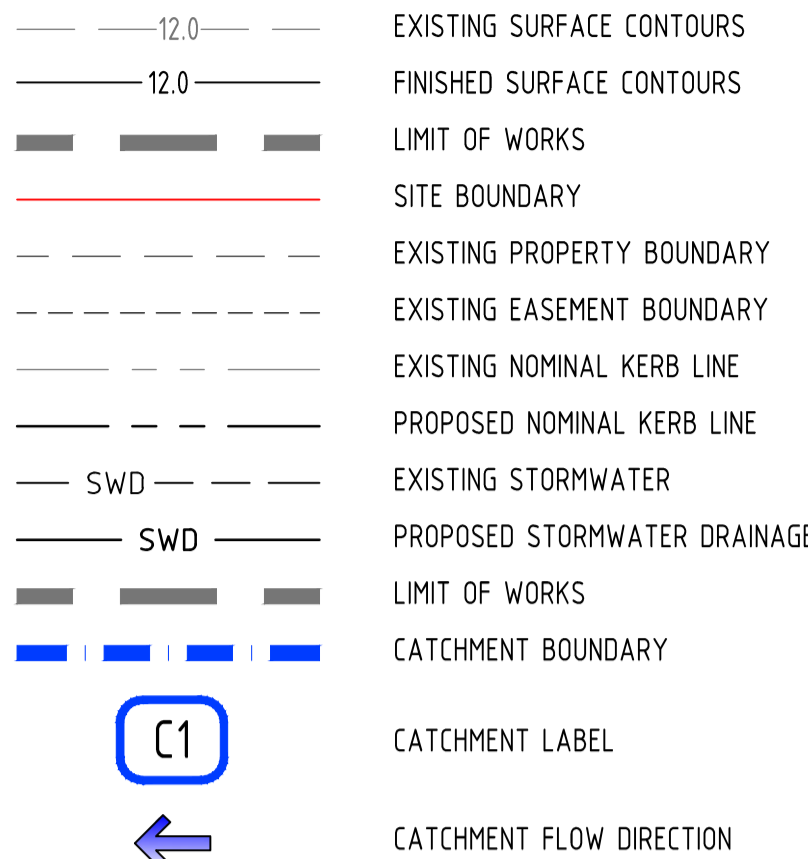
<u>CATCHMENT NAME</u>	<u>AREA (ha)</u>	<u>FRACTION IMPERVIOUS</u>
EX1	0.884	0.00
EX2	0.541	0.10



ISSUED FOR
APPROVAL

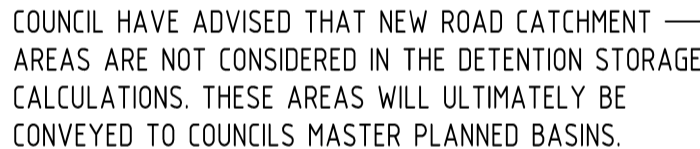
<div><div></div><div></div><div></div><div></div><div></div><div></div><div></div><div></div><div></div><div></div><div></div><div></div><div></div><div></div><div></div><div></div><div></div><div></div><div></div><div></div><div></div><div></div><div></div><div></div><div></div><div></div><div></div><div></div><div></div><div></div><div></div><div></div><div></div><div></div><div></div><div></div><div></div><div></div><div></div><div></div><div></div><div></div><div></div><div></div><div></div><div></div><div></div><div></div><div></div><div></div><div></div><div></div><div></div><div></div><div></div><div></div><div></div><div></div><div></div><div></div><div></div><div></div><div></div><div></div><div></div><div></div><div></div><div></div><div></div><div></div><div></div><div></div><div></div><div></div><div></div><div></div><div></div><div></div><div></div><div></div><div></div><div></div><div></div><div></div><div></div><div></div><div></div><div></div><div></div><div></div><div></div><div></div><div></div><div></div><div></div><div></div><div></div><div></div><div></div><div></div><div></div><div></div><div></div><div></div><div></div><div></div><div></div><div></div><div></div><div></div><div></div><div></div><div></div><div></div><div></div><div></div><div></div><div></div><div></div><div></div><div></div><div></div><div></div><div></div><div></div><div></div><div></div><div></div><div></div><div></div><div></div><div></div><div></div><div></div><div></div><div></div><div></div><div></div><div></div><div></div><div></div><div></div><div></div><div></div><div></div><div></div><div></div><div></div><div></div><div></div><div></div><div></div><div></div><div></div><div></div><div></div><div></div><div></div><div></div><div></div><div></div><div></div><div></div><div></div><div></div><div></div><div></div><div></div><div></div><div></div><div></div><div></div><div></div><div></div><div></div><div></div><div></div><div></div><div></div><div></div><div></div><div></div><div></div><div></div><div></div><div></div><div></div><div></div><div></div><div></div><div></div><div></div><div></div><div></div><div></div><div></div><div></div><div></div><div></div><div></div><div></div><div></div><div></div><div></div><div></div><div></div><div></div><div></div><div></div><div></div><div></div><div></div><div></div><div></div><div></div><div></div><div></div><div></div><div></div><div></div><div></div><div></div><div></div><div></div><div></div><div></div><div></div><div></div><div></div><div></div><div></div><div></div><div></div><div></div><div></div><div></div><div></div><div></div><div></div><div></div><div></div><div></div><div></div><div></div><div></div><div></div><div></div><div></div><div></div><div></div><div></div><div></div><div></div><div></div><div></div><div></div><div></div><div></div><div></div><div></div><div></div><div></div><div></div><div></div><div></div><div></div><div></div><div></div><div></div><div></div><div></div><div></div><div></div><div></div><div></div><div></div><div></div><div></div><div></div><div></div><div></div><div></div><div></div><div></div><div></div><div></div><div></div><div></div><div></div><div></div><div></div><div></div><div></div><div></div><div></div><div></div><div></div><div></div><div></div><div></div><div></div><div></div><div></div><div></div><div></div><div></div><div></div><div></div><div></div><div></div><div></div><div></div><div></div><div></div><div></div><div></div><div></div><div></div><div></div><div></div><div></div><div></div><div></div><div></div><div></div><div></div><div></div><div></div><div></div><div></div><div></div><div></div><div></div><div></div><div></div><div></div><div></div><div></div><div></div><div></div><div></div><div></div><div></div><div></div><div></div><div></div><div></div><div></div><div></div><div></div><div></div><div></div><div></div><div></div><div></div><div></div><div></div><div></div><div></div><div></div><div></div><div></div><div></div><div></div><div></div><div></div><div></div><div></div><div></div><div></div><div></div><div></div><div></div><div></div><div></div><div></div><div></div><div></div><div></div><div></div><div></div><div></div><div></div><div></div><div></div><div></div><div></div><div></div><div></div><div></div><div></div><div></div><div></div><div></div><div></div><div></div><div></div><div></div><div></div><div></div><div></div><div></div><div></div><div></div><div></div><div></div><div></div><div></div><div></div><div></div><div></div><div></div><div></div><div></div><div></div><div></div><div></div><div></div><div></div><div></div><div></div><div></div><div></div><div></div><div></div><div></div><div></div><div></div><div></div><div></div><div></div><div></div><div></div><div></div><div></div><div></div><div></div><div></div><div></div><div></div><div></div><div></div><div></div><div></div><div></div><div></div><div></div><div></div><div></div><div></div><div></div><div></div><div></div><div></div><div></div><div></div><div></div><div></div><div></div><div></div><div></div><div></div><div></div><div></div><div></div><div></div><div></div><div></div><div></div><div></div><div></div><div></div><div></div><div></div><div></div><div></div><div></div><div></div><div></div><div></div><div></div><div></div><div></div><div></div><div></div><div></div><div></div><div></div><div></div><div></div><div></div><div></div><div></div><div></div><div></div><div></div><div></div><div></div><div></div><div></div><div></div><div></div><div></div><div></div><div></div><div></div><div></div><div></div><div></div><div></div><div></div><div></div><div></div><div></div><div></div><div></div><div></div><div></div><div></div><div></div><div></div><div></div><div></div><div></div><div></div><div></div><div></div><div></div><div></div><div></div><div></div><div></div><div></div><div></div><div></div><div></div><div></div><div></div><div></div><div></div><div></div><div></div><div></div><div></div><div></div><div></div><div></div><div></div><div></div><div></div><div></div><div></div><div></div><div></div><div></div><div></div><div></div><div></div><div></div><div></div><div></div><div></div><div></div><div></div><div></div><div></div><div></div><div></div><div></div><div></div><div></div><div></div><div></div><div></div><div></div><div></div><div></div><div></div><div></div><div></div><div></div><div></div><div></div><div></div><div></div><div></div><div></div><div></div><div></div><div></div><div></div><div></div><div></div><div></div><div></div><div></div><div></div><div></div><div></div><div></div><div></div><div></div><div></div><div></div><div></div><div></div><div></div><div></div><div></div><div></div><div></div><div></div><div></div><div></div><div></div><div></div><div></div><div></div><div></div><div></div><div></div><div></div><div></div><div></div><div></div><div></div><div></div><div></div><div></div><div></div><div></div><div></div><div></div><div></div><div></div><div></div><div></div><div></div><div></div><div></div><div></div><div></div><div></div><div></div><div></div><div></div><div></div><div></div><div></div><div></div><div></div><div></div><div></div><div></div><div></div><div></div><div></div><div></div><div></div><div></div><div></div><div></div><div></div><div></div><div></div><div></div><div></div><div></div><div></div><div></div><div></div><div></div><div></div><div></div><div></div><div></div><div></div><div></div><div></div><div></div><div></div><div></div><div></div><div></div><div></div><div></div><div></div><div></div><div></div><div></div><div></div><div></div><div></div><div></div><div></div><div></div><div></div><div></div><div></div><div></div><div></div><div></div><div></div><div></div><div></div><div></div><div></div><div></div><div></div><div></div><div></div><div></div><div></div><div></div><div></div><div></div><div></div><div></div><div></div><div></div><div></div><div></div><div></div><div></div><div></div><div></div><div></div><div></div><div></div><div></div><div></div><div></div><div></div><div></div><div></div><div></div><div></div><div></div><div></div><div></div><div></div><div></div><div></div><div></div><div></div><div></div><div></div><div></div><div></div><div></div><div></div><div></div><div></div><div></div><div></div><div></div><div></div><div></div><div></div><div></div><div></div><div></div><div></div><div></div><div></div><div></div><div></div><div></div><div></div><div></div><div></div><div></div><div></div><div></div><div></div><div></div><div></div><div></div><div></div><div></div><div></div><div></div><div></div><div></div><div></div><div></div><div></div><div></div><div></div><div></div><div></div><div></div><div></div><div></div><div></div><div></div><div></div><div></div><div></div><div></div><div></div><div></div><div></div><div></div><div></div><div></div><div></div><div></div><div></div><div></div><div></div><div></div><div></div><div></div><div></div><div></div><div></div><div></div><div></div><div></div><div></div><div></div><div></div><div></div><div></div><div></div><div></div><div></div><div></div><div></div><div></div><div></div><div></div><div></div><div></div><div></div><div></div><div></div><div></div><div></div><div></div><div></div><div></div><div></div><div></div><div></div><div></div><div></div><div></div><div></div><div></div><div></div><div></div><div></div><div></div><div></div><div></div><div></div><div></div><div></div><div></div><div></div><div></div><div></div><div></div><div></div><div></div><div></div><div></div><div></div><div></div><div></div><div></div><div></div><div></div><div></div><div></div><div></div><div></div><div></div><div></div><div></div><div></div><div></div><div></div><div></div><div></div><div></div><div></div><div></div><div></div><div></div><div></div><div></div><div></div><div></div><div></div><div></div><div></div><div></div><div></div><div></div><div></div><div></div><div></div><div></div><div></div><div></div><div></div><div></div><div></div><div></div><div></div><div></div><div></div><div></div><div></div><div></div><div></div><div></div><div></div><div></div><div></div><div></div><div></div><div></div><div></div><div></div><div></div><div></div><div></div><div></div><div></div><div></div><div></div><div></div><div></div><div></div><div></div><div></div><div></div><div></div><div></div><div></div><div></div><div></div><div></div><div></div><div></div><div></div><div></div><div></div><div></div><div></div><div></div><div></div><div></div><div></div><div></div><div></div><div></div><div></div><div></div><div></div><div></div><div></div><div></div><div></div><div></div><div></div><div></div><div></div><div></div><div></div><div></div><div></div><div></div><div></div><div></div><div></div><div></div><div></div><div></div><div></div><div></div><div></div><div></div><div></div><div></div><div></div><div></div><div></div><div></div><div></div><div></div><div></div><div></div><div></div><div></div><div></div><div></div><div></div><div></div><div></div><div></div><div></div><div></div><div></div><div></div><div></div><div></div><div></div><div></div><div></div><div></div><div></div><div></div><div></div><div></div><div></div><div></div><div></div><div></div><div></div><div></div><div></div><div></div><div></div><div></div><div></div><div></div><div></div><div></div><div></div><div></div><div></div><div></div><div></div><div></div><div></div><div></div><div></div><div></div><div></div><div></div><div></div><div></div><div></div><div></div><div></div><div></div><div></div><div></div><div></div><div></div><div></div><div></div><div></div><div></div><div></div><div></div><div></div><div></div><div></div><div></div><div></div><div></div><div></div><div></div><div></div><div></div><div></div><div></div><div></div><div></div><div></div><div></div><div></div><div></div><div></div><div></div><div></div><div></div><div></div><div></div><div></div><div></div><div></div><div></div><div></div><div></div><div></div><div></div><div></div><div></div><div></div><div></div><div></div><div></div><div></div><div></div><div></div><div></div><div></div><div></div><div></div><div></div><div></div><div></div><div></div><div></div><div></div><div></div><div></div><div></</div></div>				
---	--	--	--	--

LEGEND



CATCHMENT TABLE (POST DEVELOPMENT)

<u>CATCHMENT NAME</u>	<u>AREA (ha)</u>	<u>FRACTION IMPERVIOUS</u>
US1	0.150	0.80
C1	0.884	0.85
C2	0.541	0.85

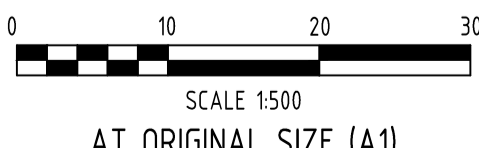


- COUNCIL HAVE ADVISED THAT NEW ROAD CATCHMENT AREAS ARE NOT CONSIDERED IN THE DETENTION STORAGE CALCULATIONS. THESE AREAS WILL ULTIMATELY BE CONVEYED TO COUNCILS MASTER PLANNED BASINS.

- POST-DEVELOPMENT UPSTREAM CATCHMENT

ISSUED FOR
APPROVAL

A	03.03.2017	Issued for Approval				KS	CM
Rev	Date	Description				By	Chk



Sydney Office
Suite 802, Level 8, 181 Miller Street
North Sydney, New South Wales 2060, Australia

T 1300 657 402 F +617 3871 2266
E info@adgce.com W www.adgce.com
BRISBANE / SYDNEY / MELBOURNE / GOLD COAST / SUNSHINE COAST / DARWIN / PERTH

Client
NI | BYRON DEVELOPMENT PTY LTD

Project Name
MULTI RESIDENTIAL DEVELOPMENT
76 RICKARD ROAD,
LEPPINGTON

Discipline	CIVIL
------------	-------

Status	APPROVAL
--------	----------

Designed B	
CM	

Checked By
MD

Project No.
10510

Drawn By
KQ

The concepts and information contained in this document are the copyright of ADG Engineers (Aust) Pty Ltd. Use or copying of the document in whole or in part without the written permission of ADG Engineers (Aust) Pty Ltd constitutes an infringement of copyright. Do not scale drawings. If in doubt, ask!

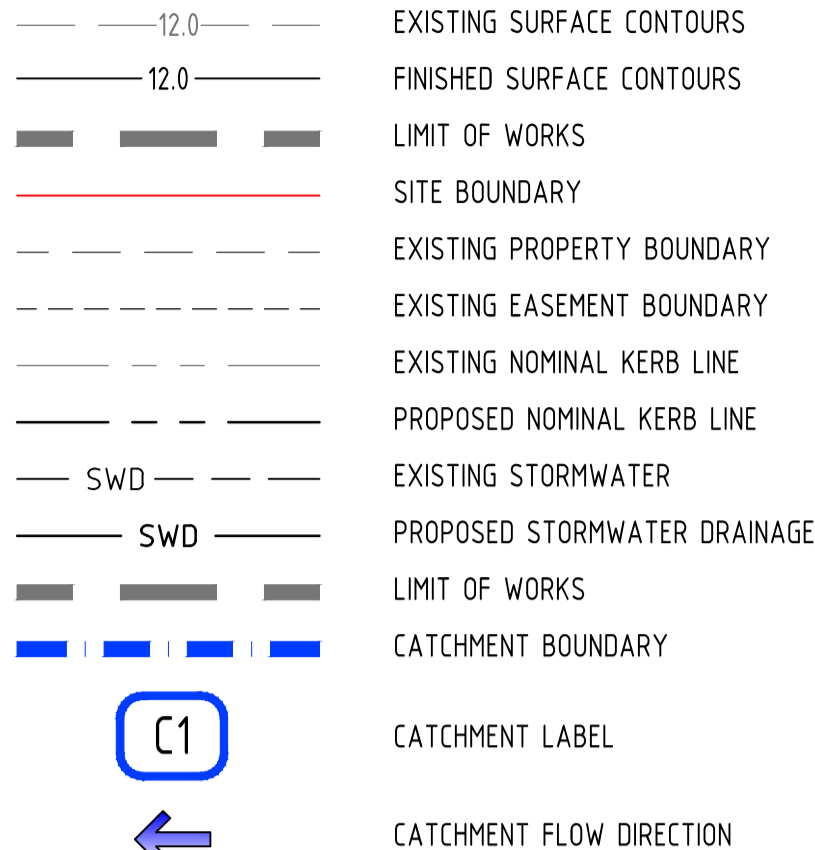
the copyright of AE
whole or in part with

Title
STORMWATER DRAINAGE
PRELIMINARY POST DEVELOPMENT
CATCHMENT PLAN

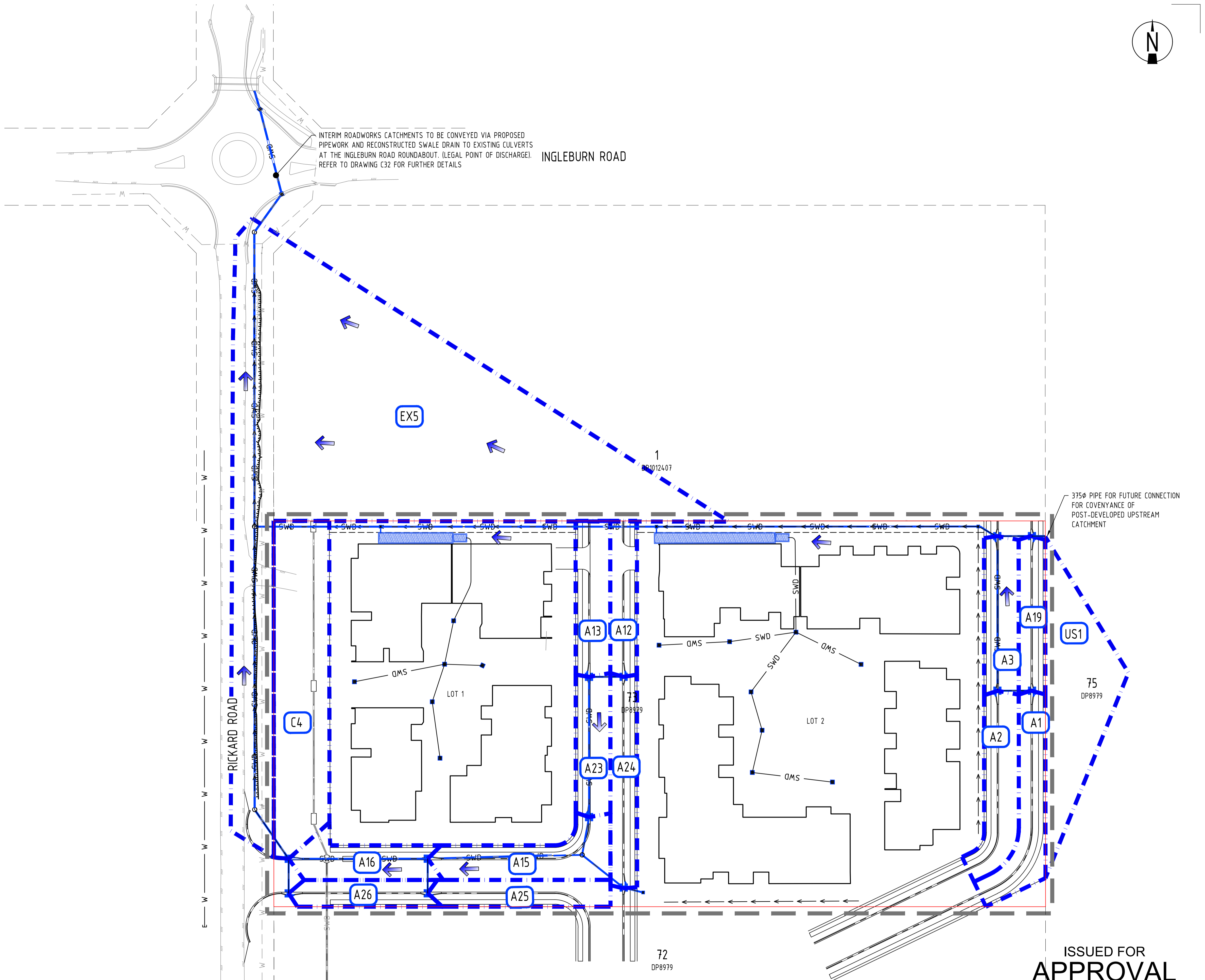
Drawing No.

Revisio

LEGEND

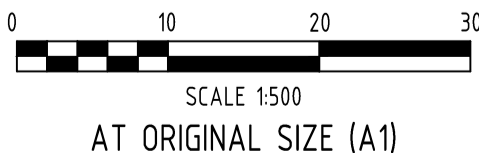


INTERIM ROADWORKS CATCHMENTS		
<u>CATCHMENT NAME</u>	<u>AREA (ha)</u>	<u>FRACTION IMPERVIOUS</u>
US1	0.150	0.80
A1	0.044	0.80
A2	0.044	0.80
A3	0.037	0.80
A7	0.013	0.80
A8	0.016	0.80
A13	0.020	0.80
A23	0.033	0.80
A15	0.049	0.80
A16	0.035	0.80
A19	0.021	0.80
A12	0.012	0.80
A24	0.029	0.80
A25	0.024	0.80
A26	0.019	0.80
C4	0.123	0.60
EX5	0.541	0.10



ISSUED FOR
APPROVAL

Rev	Date	Description	By	Chk
A	03.03.2017	Issued for Approval	KS	CM



Sydney Office
Suite 802, Level 8, 181 Miller Street
North Sydney, New South Wales 2060, Australia

T 1300 657 402 F +617 3871 2266
E info@adgce.com W www.adgce.com
BRISBANE / SYDNEY / MELBOURNE / GOLD COAST / SUNSHINE COAST / DARWIN / PERTH

Client
NLI BYRON DEVELOPMENT PTY LTD

Project Name
MULTI RESIDENTIAL DEVELOPMENT
76 RICKARD ROAD,
LEPPINGTON

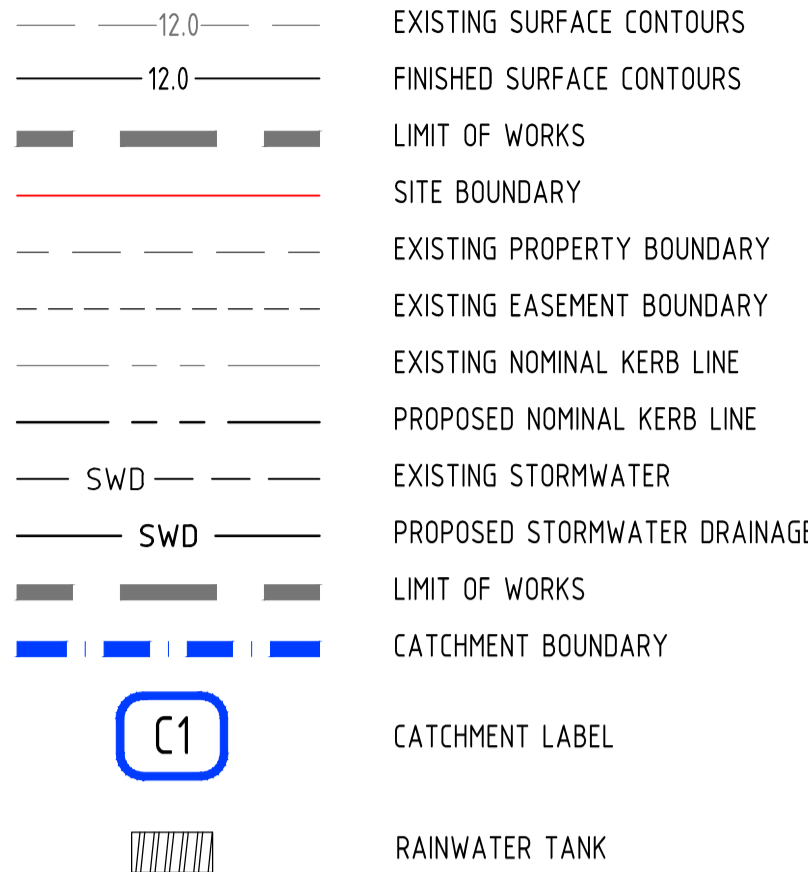
Discipline CIVIL		Status APPROVAL
Designed By CM	Checked By NB	Approved By JG
Project No. 18540	Drawn By KS	Scale at A1 1:500
<p>The concepts and information contained in this document are the copyright of ADG Engineers (Australia) Pty Ltd. Use or copying of the document in whole or in part without the written permission of ADG Engineers (Australia) Pty Ltd constitutes an infringement of copyright.</p> <p>enquiries@adgengineers.com.au</p>		

Title

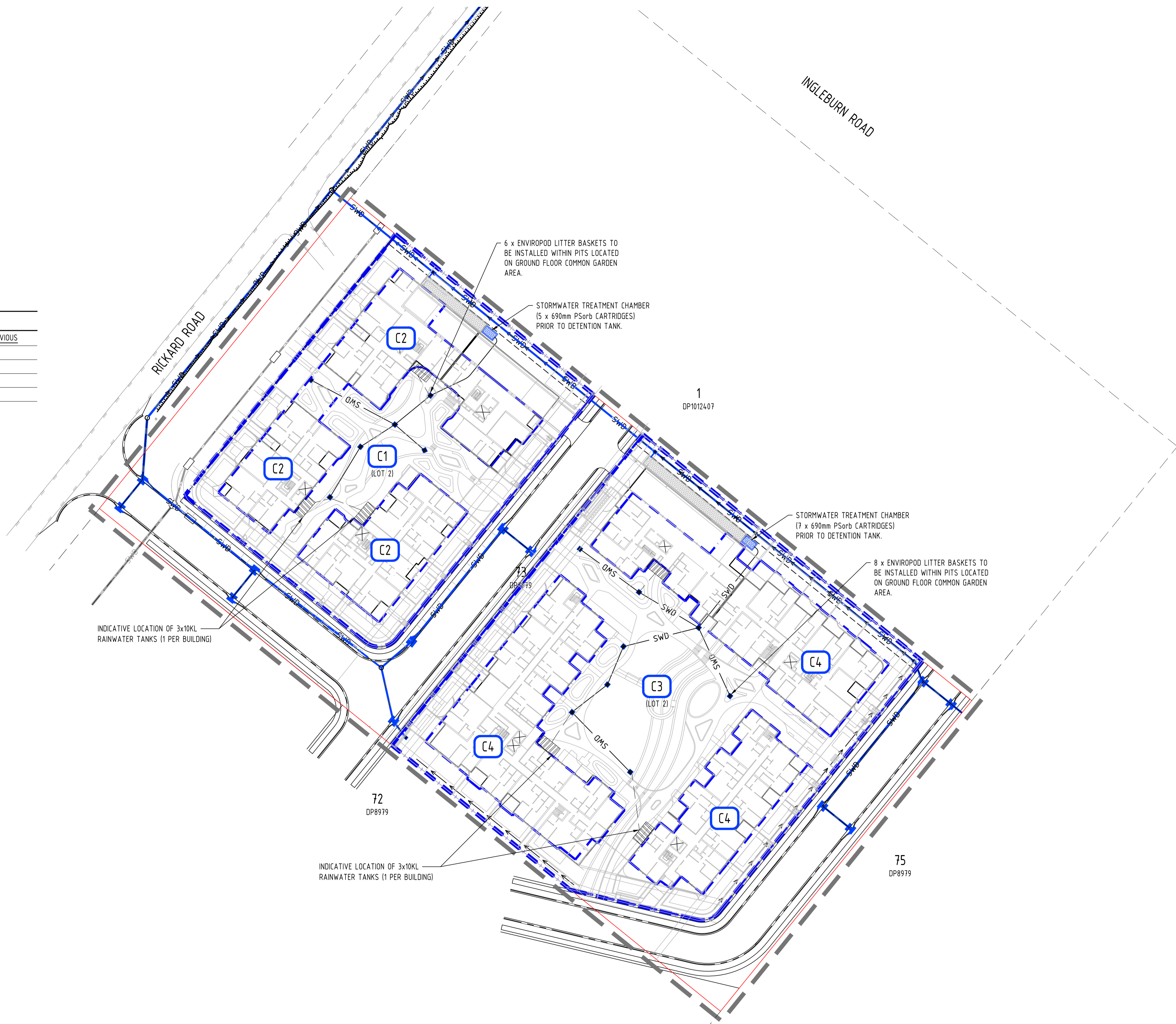
STORMWATER DRAINAGE
PRELIMINARY INTERIM ROADWORKS
CATCHMENT PLAN

Drawing No.	Revised
C42	A

LEGEND

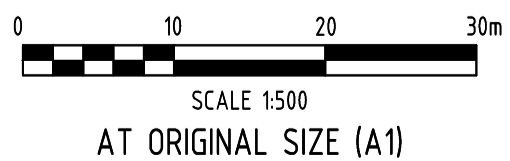


CATCHMENT NAME	AREA (ha)	FRACTION IMPERVIOUS
C1	0.307 (GROUND)	0.40
C2	0.240 (ROOF)	1.00
C3	0.494 (GROUND)	0.30
C4	0.390 (ROOF)	1.00



ISSUED FOR
APPROVAL

A	03.03.2017	Issued for Approval	KS	CM
Rev	Date	Description	By	Chk



Sydney Office
Suite 802, Level 8, 181 Miller Street
North Sydney, New South Wales 2060, Australia

T 1300 657 402 F +617 3871 2266
E info@adgce.com W www.adgce.com
BRISBANE / SYDNEY / MELBOURNE / GOLD COAST / SUNSHINE COAST / DARWIN / PERTH

Client NLI BYRON DEVELOPMENT PTY LTD	Discipline CIVIL	Status APPROVAL	Title STORMWATER DRAINAGE PRELIMINARY QUALITY CATCHMENT PLAN
Project Name MULTI RESIDENTIAL DEVELOPMENT 76 RICKARD ROAD, LEPPINGTON	Designed By CM	Checked By NB	Approved By JG
	Project No. 18540	Drawn By KS	Scale at A1 1:500
The concepts and information contained in this document are the copyright of ADG Engineers (Aust) Pty Ltd. Use or copying of the document in whole or in part without the written permission of ADG Engineers (Aust) Pty Ltd constitutes an infringement of copyright. Do not scale drawings. If in doubt, ask!			Drawing No. C43
			Revision A

PLOT DATE: 3/9/2017 1:01 PM FILENAME: J:\18000\18540 - RICKARD\CVL\DWG\RICKARD RD\18540-C43-QUALITY CATCHMENT PLAN.DWG

FULL SIZE ON ORIGINAL 0 10 20 30 40 50 60 70 80 90 100mm

LINE A1



Title

STORMWATER DRAINAGE
LONGITUDINAL SECTIONS
SHEET 1 OF 2

PLOT DATE: 3/9/2017 12:53 PM FILENAME: J:\18000\18540 - RICKARD\DWG\RICKARD RD\18540-C44-C45-SW LONG SECTIONS.DWG

